

Product Brochure For M577

## Workshop Turret Milling Machine - HM-51B

Table Travel: (X) - 580mm (Y) - 190mm (Z) - 350mm

Includes Digital Readout System & Swivel Table

**On Sale**

Ex GST	Inc GST
<del>\$6,590.00</del>	<del>\$7,249.00</del>
<b>\$6,150.00</b>	<b>\$6,765.00</b>



ORDER CODE:	M577
MODEL:	HM-51B
Digital Readout:	3-Axis Digital Readout
Type:	Vertical
Table Size (mm):	1000 x 240
Column Type:	~
Spindle Taper - Vertical:	NT30
Spindle Taper - Horizontal:	~
Longitudinal Travel (X-Axis) (mm):	580*
Cross Travel (Y-Axis) (mm):	190*
Vertical Travel (Z-Axis) (mm):	350
Type of Slides:	Dovetail
Ram Travel (mm):	350
Spindle to Table (mm):	390
Spindle to Base:	~
Spindle Travel / Diameter (mm):	125 / 90
Throat Depth (max.) (mm):	550
Tilting Head (Left ~ Right):	±45°
Tilting Head (Forward ~ Back):	Fixed
Drilling Capacity (mm):	30
End Milling Capacity (mm):	25
Face Milling Capacity (mm):	80
Power Feed - Quill (mm/rev):	Manual
Power Feed - Longitudinal (X-Axis) (mm/min):	20 - 2000
Power Feed - Cross (Y-Axis) (mm/min):	~
Power Feed - Vertical (Z-Axis) (mm/min):	~
Table T-Slot Size (inch / mm):	14
Work Table Load Capacity (kg):	175
Spindle Speeds Vertical (No./ rpm):	9 (220 - 2400)
Spindle Speeds Horizontal (No./ rpm):	~
Spindle Speeds - Universal Head:	~
Motor Power - Vertical Spindle (kW / hp):	2.2 / 3
Motor Power - Horizontal Spindle (kW / hp):	~
Motor Power - Universal Head:	~
Voltage / Amperage (V / amp):	240 / 15
Nett Weight (kg):	850

### Description

A well-built entry level turret milling / drilling machine with a powerful continuous-load 2.2kW / 3hp motor, intended for trade use. The work table is precision made with adjustable dovetail guides and is recognised for its 580mm X axis by 190mm Y axis travel. There is a three armed handle on the side for drilling also incorporating a fine feed control hand wheel on the front for milling. The screwed belt guard covers on each side of the head offer secure safety whilst providing easy access to the belts and pulleys for speed changing.

Other features include 3 axis digital readout system, taper roller bearing support for the spindle, easy-to-read drilling depth stop, low voltage work light, coolant system, X axis power feed unit, drill chuck, 2 & 3 morse taper adaptors. The combination of generous sized vertical support and rugged cast iron construction throughout reduces vibration and guarantees accurate and chatter-free operation.

### Features

- 3 Axis digital readout system  
Swivel table left & right with graduated scale

## Product Brochure For M577

- Mill head tilts to  $\pm 45^\circ$  left to right
  - 300mm horizontally sliding and rotating ram
  - NT30 vertical spindle is hardened and ground
  - Precision-ground dovetail slide-ways and table
  - Precision milling table incorporating machined T-slots
  - Rear concertina slide-way cover
  - Forward and reverse on/off switch
  - Fine hand wheel operated quill feed
  - Swarf & splash tray
  - Spindle lock for quill
  - Metric dial graduations @ 0.02mm for X, Y & Z-Axis
  - Vertical quill hand-wheel dial graduations @ 0.05mm
  - All slides utilise dovetail construction for maximum rigidity
- \* Note: X travel maybe reduced due to digital readout scales and safety stops

### Includes

- 3 Axis digital readout system
- X-Axis power feed
- Safety cutter guard
- Swarf tray
- Coolant system
- Halogen lamp
- Drill chuck & arbor
- NT30 to 3MT adaptor
- 2MT & 3MT adaptors
- M12 x 1.75mm Drawbar

### Specific Features



Head Tilts to 45 Deg Left Right



Side View



Head Controls



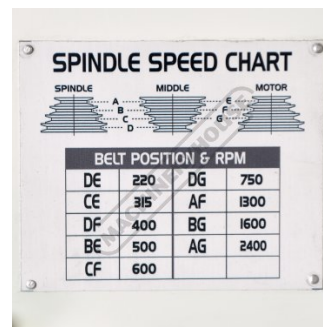
Control Panel



3 Axis Digital Readout System



Motor And Drawbar



Spindle Speed Chart



Safety Cutter Guard

Product Brochure For M577



Head Rotation Scale



Quill Hand Wheel



Adjustable Swivel and Sliding Ram



Work Light and Coolant Hose



Coolant Pump



Concertina Slideway Cover



X Axis Power Feed with Rapid



X Axis Dial Power Feed Slide



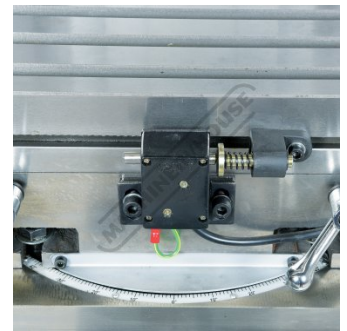
X Axis Dial



Y Axis Dial



Z Axis Handle



Swivel Table Scale

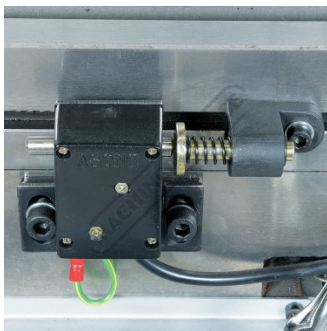


Table Cutoff Switch



Included Accessories



Front View



Head Tilts to 45 Deg Left-Right

Product Brochure For M577

**Recommended Accessories**

**V106**  
Vertex K-Type Milling Vice



**C0965**  
Clamp Kit 58 piece - Workshop Series



**C9245**  
Collet & Chuck Set - 8 Piece



**C928**  
Collet & Chuck Set - 20 Piece



**M3301**  
Metric HSS Slot Drill & End Mill Set - 10 Piece



**M3321**  
Imperial HSS Slot Drill & End Mill Set - 10 Piece



**M530**  
Universal Milling Kit - 4 Piece



**M540**  
Face Mill Arbor



Product Brochure For M577

**R004**  
 Vertex Super Indexing Head



**R006**  
 Vertex Rotary Table



**M184**  
 Precision Boring Head



**M197**  
 Boring Head Shank



**M182**  
 Precision Boring Head Kit



**M183**  
 Precision Boring Head Kit



**M193**  
 Boring Head Shank



**M250**  
 Parallel Set - 8 Piece



**M252**  
 Parallel Set - 18 Piece



**M243**  
 Angle Plate - Precision Ground



**M242**  
 Angle Plate - Precision Ground



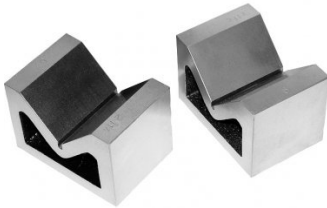
**V010**  
 Alloy Steel Vee Block



Product Brochure For M577

V006

Cast Iron Vee Block



S090A

Soluble Metal Cutting Fluid - 1 Litre



S090

Soluble Metal Cutting Fluid - 5 Litre



S076

Cutting Tool Lubricant Fluid - 500ml



S077

Drilling, Tapping & Cutting Tool Lubricant Spray - 400g



S075

Cutting Tool Lubricant Paste - 200g



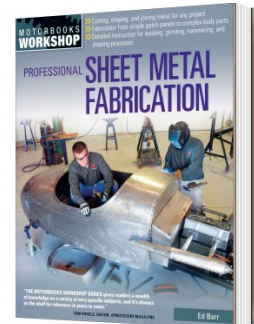
S074

Cutting Tool Lubricant Paste - 500g



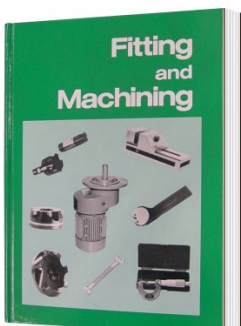
L3455

Professional Sheet Metal Fabrication Book



L341

Fitting and Machining Technical Book



L300

Magnetic Swarf Remover



M9991

Magnetic Floor Sweeper



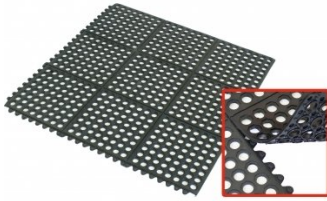
M800

Rubber Mat - Anti-Fatigue



Product Brochure For M577

**M805**  
 Rubber Mat - Anti-Fatigue



**O000**  
 SpillFix Universal Organic Absorbent



**O043**  
 Rust & Corrosion Preventive



**O042**  
 General Purpose Lubricant & Corrosion Inhibitor



**O040**  
 Rust & Corrosion Preventive



**O044**  
 Rust & Corrosion Preventive

