

Product Brochure For M579

## Workshop Turret Milling Machine Inverter Variable Speed, Geared Head - Horizontal & Vertical - HM-54GV

Table Travel: (X) - 600mm (Y) - 200mm (Z) - 340mm

Includes Digital Readout System & Swivel Table

**On Sale**

<b>Ex GST</b>	<b>Inc GST</b>
<del>\$7,990.00</del>	<del>\$8,789.00</del>
<b>\$7,540.00</b>	<b>\$8,294.00</b>



ORDER CODE:	M579
MODEL:	HM-54GV
Digital Readout:	3-Axis Digital Readout
Type:	Vertical & Horizontal
Table Size (mm):	1000 x 240
Column Type:	~
Spindle Taper - Vertical:	NT30
Spindle Taper - Horizontal:	NT30
Longitudinal Travel (X-Axis) (mm):	600*
Cross Travel (Y-Axis) (mm):	200*
Vertical Travel (Z-Axis) (mm):	340
Type of Slides:	Dovetail
Ram Travel (mm):	450
Spindle to Table (mm):	375
Spindle to Base:	~
Spindle Travel / Diameter (mm):	120 / 90
Throat Depth (max.) (mm):	640
Tilting Head (Left ~ Right):	±45°
Tilting Head (Forward ~ Back):	Fixed
Drilling Capacity (mm):	40
End Milling Capacity (mm):	25
Face Milling Capacity (mm):	80
Power Feed - Quill (mm/rev):	Manual
Power Feed - Longitudinal (X-Axis) (mm/min):	20 - 2000
Power Feed - Cross (Y-Axis) (mm/min):	~
Power Feed - Vertical (Z-Axis) (mm/min):	~
Table T-Slot Size (inch / mm):	14
Work Table Load Capacity (kg):	160
Spindle Speeds Vertical (No./ rpm):	Variable (100 - 2000)
Spindle Speeds Horizontal (No./ rpm):	9 (60 - 1350)
Spindle Speeds - Universal Head:	~
Motor Power - Vertical Spindle (kW / hp):	2.2 / 3
Motor Power - Horizontal Spindle (kW / hp):	1.5 / 2
Motor Power - Universal Head:	~
Voltage / Amperage (V / amp):	240 / 10
Nett Weight (kg):	900

### Description

This HM-54GV geared head vertical and horizontal turret milling machine now includes a inverter variable speed drive on the vertical spindle, with a powerful continuous-load 2.2kW / 3hp vertical motor and a 2hp motor for the horizontal spindle, intended for trade use. The work table is precision made with adjustable dovetail guides and is recognised for its 600mm X axis by 200mm Y axis travel. There is a three armed handle on the side for drilling also incorporating a fine feed control hand wheel on the front for milling. The hi-low geared head selector lever mounted on right side of milling head allows for quick change off speed range.

Other features include 3-Axis digital readout system, taper roller bearing support for the spindle, easy-to-read drilling depth stop, low voltage LED work light, coolant system, X axis power feed unit, drill chuck, 1" & 1-1/4" horizontal arbors, 2 & 3 morse taper adaptors. The combination of generous sized vertical support and rugged cast iron construction throughout reduces vibration and guarantees accurate and chatter-free operation.

Extra Features:  
 Swivel table

## Product Brochure For M579

1" & 1-1/4" horizontal arbors

### Features

- Electronic inverter variable spindle speeds
  - 3 Axis digital readout system
  - Swivel table left & right with graduated scale
  - Mill head tilts to  $\pm 45^\circ$  left to right
  - 450mm horizontally sliding and rotating ram
  - NT30 Horizontal and vertical spindles that are hardened and ground
  - Precision-ground dovetail slide-ways and table
  - Precision milling table incorporating machined T slots
  - Rear concertina slide-way cover
  - Forward and reverse button switch
  - Fine hand wheel operated quill feed
  - Swarf & splash tray
  - Spindle lock for quill
  - Metric dial graduations @ 0.02mm for X , Y & Z-Axis
  - Vertical quill hand-wheel dial graduations @ 0.05mm
  - All slides utilise dovetail construction for maximum rigidity
  - Includes 1" & 1-1/4" arbors for the horizontal spindle
- \* Note: X travel maybe reduced due to digital readout scales and safety stops

### Includes

- Electronic inverter variable spindle speeds
- 3 Axis digital readout system
- X-Axis power-feed
- Safety cutter guard
- Swarf tray
- Coolant system
- LED work light
- Drill chuck & arbor
- NT30 to 3MT adaptor
- 2MT & 3MT adaptors
- M12 x 1.75mm Drawbar

### Specific Features



Left View



Head Controls



3 Axis Digital Readout System



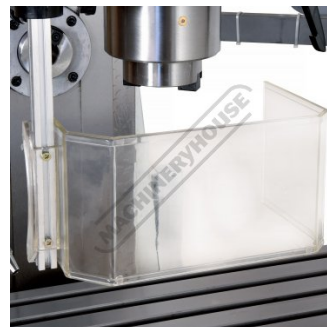
Control Panel With Digital Speed Readout



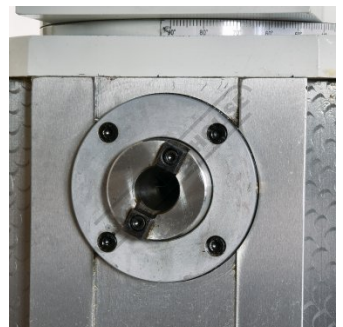
Vertical Variable Speed Motor



Vertical Spindle With Quill Lock



Safety Cutter Guard



Horizontal Spindle

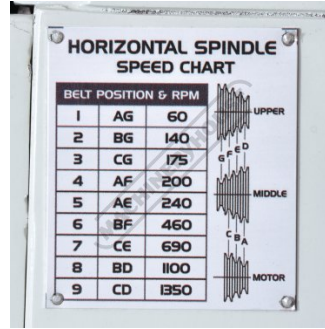
Product Brochure For M579



Horizontal Spindle Support



Horizontal Spindle Control Panel



Horizontal Spindle Speed Chart



Quill Feed-Fine Feed Handles



Fine Feed Quill Dials-Handle Dials



High Low Speed Gear Selector



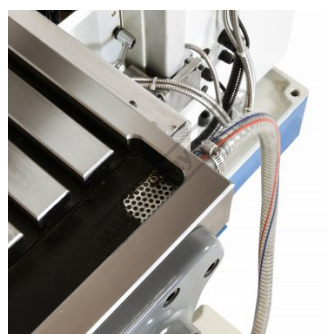
Concentina Slideway Cover



Tilt Head- 45 Degree



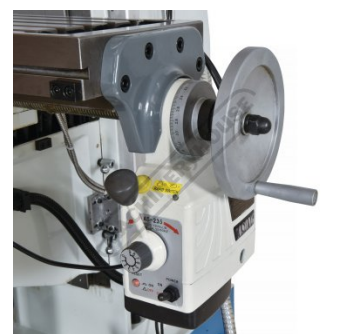
Rotating Adjustable Sliding Ram



Work Table Coolant Return



Worklight And Coolant Hose



X Axis Power Feed With Rapid

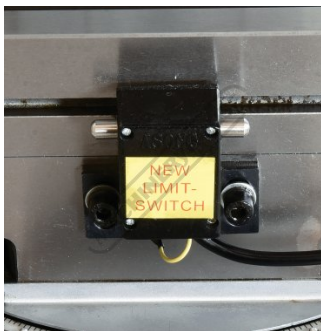


Table Feed Limit Switch



Adjustable Table Stops



Swivel Table Scale



Hardened Ground Work Table

Product Brochure For M579



Z Axis Handle



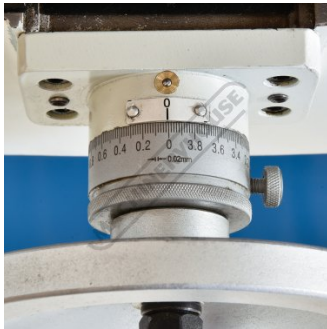
Z Axis Dial



X Axis Dial



X Axis On Power Feed



Y Axis Dial



Coolant Pump



Included Accessories

**Recommended Accessories**

**V106**  
 Vertex K-Type Milling Vice



**C0965**  
 Clamp Kit 58 piece - Workshop Series



**C9245**  
 Collet & Chuck Set - 8 Piece



**C928**  
 Collet & Chuck Set - 20 Piece



Product Brochure For M579

M3301

Metric HSS Slot Drill & End Mill Set - 10 Piece



M3321

Imperial HSS Slot Drill & End Mill Set - 10 Piece



M530

Universal Milling Kit - 4 Piece



M540

Face Mill Arbor



R004

Vertex Super Indexing Head



R006

Vertex Rotary Table



M184

Precision Boring Head



M197

Boring Head Shank



M182

Precision Boring Head Kit



M183

Precision Boring Head Kit



M193

Boring Head Shank



M250

Parallel Set - 8 Piece



Product Brochure For M579

M252  
 Parallel Set - 18 Piece



M243  
 Angle Plate - Precision Ground



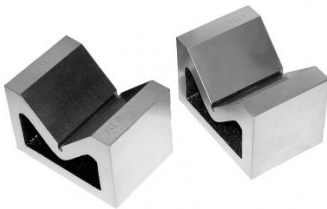
M242  
 Angle Plate - Precision Ground



V010  
 Alloy Steel Vee Block



V006  
 Cast Iron Vee Block



S090A  
 Soluble Metal Cutting Fluid - 1 Litre



S090  
 Soluble Metal Cutting Fluid - 5 Litre



S076  
 Cutting Tool Lubricant Fluid - 500ml



S077  
 Drilling, Tapping & Cutting Tool Lubricant Spray - 400g



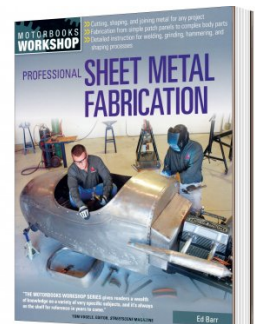
S075  
 Cutting Tool Lubricant Paste - 200g



S074  
 Cutting Tool Lubricant Paste - 500g

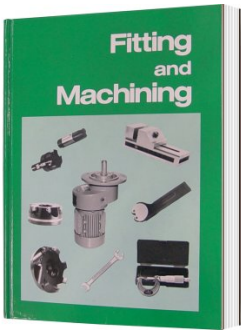


L3455  
 Professional Sheet Metal Fabrication Book



Product Brochure For M579

L341  
 Fitting and Machining Technical Book



L300  
 Magnetic Swarf Remover



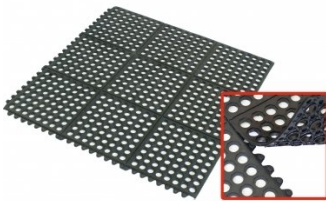
M9991  
 Magnetic Floor Sweeper



M800  
 Rubber Mat - Anti-Fatigue



M805  
 Rubber Mat - Anti-Fatigue



O000  
 SpillFix Universal Organic Absorbent



O043  
 Rust & Corrosion Preventive



O042  
 General Purpose Lubricant & Corrosion Inhibitor



O040  
 Rust & Corrosion Preventive



O044  
 Rust & Corrosion Preventive

