

Product Brochure For M593D

## Industrial Turret Milling Machine - BM-22AD

Table Travel: (X) - 590mm (Y) - 295mm (Z) - 380mm



ORDER CODE:	M593D
MODEL:	BM-22AD
Digital Readout:	3-Axis Counter, X, Y Scales
Type:	Vertical
Table Size (mm):	1066 x 230
Column Type:	~
Spindle Taper - Vertical:	NT30
Spindle Taper - Horizontal:	~
Longitudinal Travel (X-Axis) (mm):	595
Cross Travel (Y-Axis) (mm):	300
Vertical Travel (Z-Axis) (mm):	360
Type of Slides:	Dovetail
Ram Travel (mm):	500
Spindle to Table (mm):	~
Spindle to Base:	~
Spindle Travel / Diameter (mm):	127 / 86
Throat Depth (max.) (mm):	720
Tilting Head (Left ~ Right):	±90°
Tilting Head (Forward ~ Back):	±45°
Drilling Capacity (mm):	~
End Milling Capacity (mm):	~
Face Milling Capacity (mm):	~
Power Feed - Quill (mm/rev):	0.04 / 0.08 / 0.15
Power Feed - Longitudinal (X-Axis) (mm/min):	20 - 2000
Power Feed - Cross (Y-Axis) (mm/min):	Optional
Power Feed - Vertical (Z-Axis) (mm/min):	Optional
Table T-Slot Size (inch / mm):	16
Work Table Load Capacity (kg):	250
Spindle Speeds Vertical (No./ rpm):	8 (65 - 2330)
Spindle Speeds Horizontal (No./ rpm):	~
Spindle Speeds - Universal Head:	~
Motor Power - Vertical Spindle (kW / hp):	2.2 / 3
Motor Power - Horizontal Spindle (kW / hp):	~
Motor Power - Universal Head:	~
Voltage / Amperage (V / amp):	240 / 15
Nett Weight (kg):	1100

### Features

- 3-Axis digital readout counter fitted with 2-Axis X & Y scales only
- 3hp, 240V motor, 8-speeds V-belt drive system
- NT30 Spindle taper with a chrome & ground quill
- Hardened & ground work table & slide-ways
- All slides utilise dovetail construction for maximum rigidity
- Meehanite casting for high strength & minimal deformation
- Quality electrics & overload protection in an easy access enclosure
- Horizontal travelling ram mounted on a rotating base allowing repositioning of spindle
- The ram incorporates a tail lug (spigot) to accept a slotting attachment etc.
- High / neutral and low gear selection lever to maximise torque
- Asong X-Axis power-feed with adjustable micro switch feed stops
- Metric dial graduations @ 0.02mm for X , Y & Z-Axis
- Automatic quill feed 0.04, 0.08, 0.15mm/rev
- Automatic cut off depth stop on quill
- Oil lubrication pump and reservoir
- Slideway covers Y & Z-Axis
- Mill head tilts to ±45° forward and back
- Mill head tilts to ±90° left and right
- Coolant system with flexible hose

Product Brochure For M593D

- Manual quick action quill lever
- Mechanical spindle brake
- Tool box and manual

**Includes**

- 3-Axis digital readout counter fitted with X & Y scales only
- One-shot oil lubrication pump and reservoir
- Drawbar M12 thread
- Coolant system
- Slideway covers
- X-Axis power-feed
- Halogen light
- Safety cutter guard
- Swarf tray

**Specific Features**



Left View



Control Panel



3 Axis DRO with X and Y Axis Scales



X and Y Axis Scales



Head Controls



Spindle Brake Lever, High or Low Speed Selector and Belt Tension Lever



Speed Chart



8 Speed V Belt Drive System



Low High Speed Selector



Quill Feed Depth Stop



Quill Feed Engagement Lever

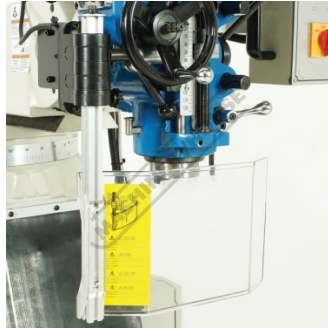


Feed Engage Disengage Lever

Product Brochure For M593D



Quill Handle



Safety Cutter Guard



Hardened and Ground Work Table and Slide Ways



X Axis Power Feed With Rapid

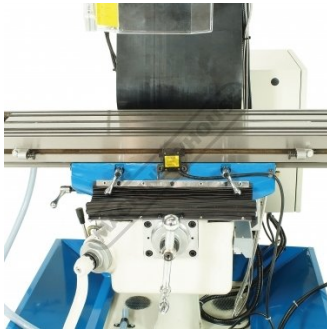


Table Feed Limit Switch



X Axis Dial



Y Axis Dial



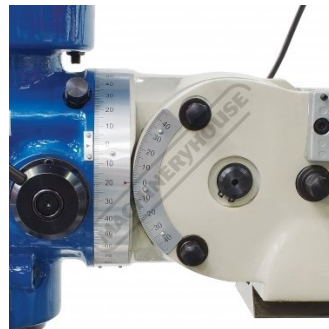
Knee Feed Handle



Z Axis Dial



Slide Way Cover



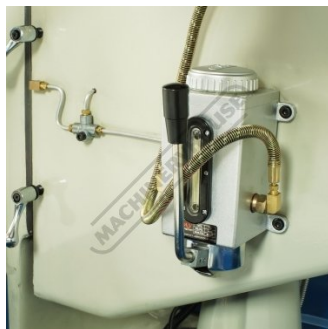
Tilting and Rotating Head



Adjustable Swivel and Sliding Ram



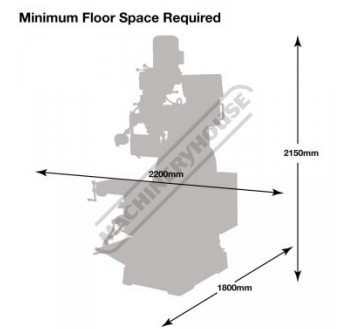
Tail Lug Supports Optional Slotting Head



One Shot Lubrication Pump



Halogen Worklight and Coolant Hose



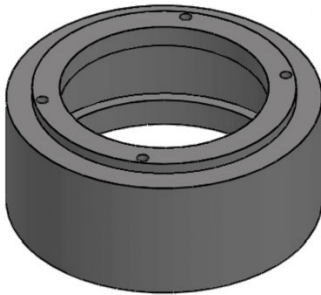
Minimum Floor Space Required

Product Brochure For M593D

**Recommended Accessories**

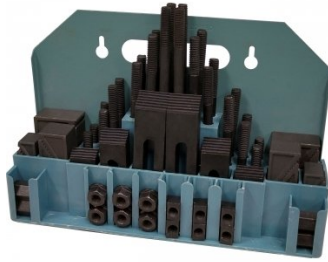
**M224**

Riser Spacer - Suits Turret Milling Machines



**C0966**

Clamp Kit 58 piece - Workshop Series



**C096A**

Clamp Kit 58 piece - Industrial Series



**C928**

Collet & Chuck Set - 20 Piece



**M3301**

Metric HSS Slot Drill & End Mill Set - 10 Piece



**M3321**

Imperial HSS Slot Drill & End Mill Set - 10 Piece



**M184**

Precision Boring Head



**M185**

Precision Universal Facing & Boring Head



Product Brochure For M593D

**M197**  
 Boring Head Shank



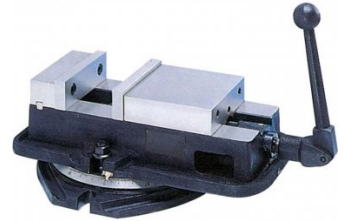
**M181**  
 Boring Bar Set - 12 piece



**M181A**  
 Boring Bar Set - 4 piece



**V306**  
 Vertex Anglock Machine Vice



**C290**  
 Heavy Duty Drill Chuck - Keyed Type



**C294**  
 Industrial Drill Chuck - Keyless Type



**D451**  
 NT30 x JT3 Drill Chuck Arbor



**M250**  
 Parallel Set - 8 Piece



**M252**  
 Parallel Set - 18 Piece



**R008**  
 Vertex Rotary Table



**R010**  
 Vertex Rotary Table



**D001**  
 Vertex Dividing Head - Semi Universal



Product Brochure For M593D

**C280**  
 3 Jaw Self Centring Lathe Chuck



**R002**  
 Vertex Super Indexing Head



**M510**  
 Face Mill 90° - Positive Rake



**M512**  
 Face Mill 90° - Positive Rake



**M503**  
 Face Mill 90° - Positive Rake



**M515**  
 Face Mill 45° - Super High-Rake



**M517**  
 Face Mill 45° - Super High-Rake



**M518**  
 Face Mill 45° - Super High-Rake



**L065**  
 KYOCERA Carbide Inserts - Milling



**L066**  
 KYOCERA Carbide Inserts - Milling



**L059**  
 Carbide Inserts - Milling



**M540**  
 Face Mill Arbor



Product Brochure For M593D

M542  
Face Mill Arbor



M544  
Face Mill Arbor



M545  
Face Mill Arbor



M247  
Air Power Drawbar



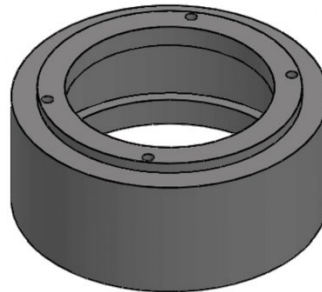
M2295  
Power Feed Unit



M229  
Power Feed Unit



M223  
Riser Spacer - Suits Turret Milling Machines



M225  
Precision Slotting Head Attachment



S090A  
Soluble Metal Cutting Fluid - 1 Litre



S090  
Soluble Metal Cutting Fluid - 5 Litre



S076  
Cutting Tool Lubricant Fluid - 500ml



S077  
Drilling, Tapping & Cutting Tool Lubricant Spray - 400g



Product Brochure For M593D

**S075**  
 Cutting Tool Lubricant Paste - 200g



**S074**  
 Cutting Tool Lubricant Paste - 500g



**L300**  
 Magnetic Swarf Remover



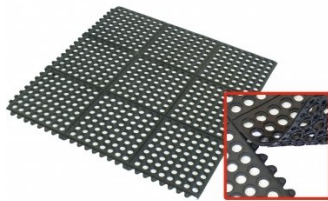
**M9991**  
 Magnetic Floor Sweeper



**M800**  
 Rubber Mat - Anti-Fatigue



**M805**  
 Rubber Mat - Anti-Fatigue



**O000**  
 SpillFix Universal Organic Absorbent



**O043**  
 Rust & Corrosion Preventive



**O042**  
 General Purpose Lubricant & Corrosion Inhibitor



**O040**  
 Rust & Corrosion Preventive



**O044**  
 Rust & Corrosion Preventive

