

Product Brochure For M596D

## Industrial Turret Milling Machine - BM-52VE

Table Travel: (X) - 860mm (Y) - 425mm (Z) - 400mm

Includes Digital Readout System



ORDER CODE:	M596D
MODEL:	BM-52VE
Digital Readout:	3-Axis Digital Readout
Type:	Vertical
Table Size (mm):	1370 x 254
Column Type:	~
Spindle Taper - Vertical:	NT40
Spindle Taper - Horizontal:	~
Longitudinal Travel (X-Axis) (mm):	860
Cross Travel (Y-Axis) (mm):	425
Vertical Travel (Z-Axis) (mm):	400
Type of Slides:	Dovetail (X), Square (Y & Z)
Ram Travel (mm):	470
Spindle to Table (mm):	440
Spindle to Base:	~
Spindle Travel / Diameter (mm):	127 / 86
Throat Depth (max.) (mm):	609
Tilting Head (Left ~ Right):	±90°
Tilting Head (Forward ~ Back):	±45°
Drilling Capacity (mm):	~
End Milling Capacity (mm):	~
Face Milling Capacity (mm):	~
Power Feed - Quill (mm/rev):	0.038 / 0.076 / 0.152
Power Feed - Longitudinal (X-Axis) (mm/min):	20 - 2000
Power Feed - Cross (Y-Axis) (mm/min):	20 - 2000
Power Feed - Vertical (Z-Axis) (mm/min):	Rapid
Table T-Slot Size (inch / mm):	16
Work Table Load Capacity (kg):	350
Spindle Speeds Vertical (No./ rpm):	Variable (50 - 3650)
Spindle Speeds Horizontal (No./ rpm):	~
Spindle Speeds - Universal Head:	~
Motor Power - Vertical Spindle (kW / hp):	3.75 / 5
Motor Power - Horizontal Spindle (kW / hp):	~
Motor Power - Universal Head:	~
Voltage / Amperage (V / amp):	415
Nett Weight (kg):	1130

### Description

Quality product representing excellent value

### Features

- 3 Axis digital readout fitted
- 5HP 415V motor with mechanical variable speed system
- NT40 Spindle taper with a chrome & ground quill
- Hardened & ground work table & slide-ways
- Square construction slides for Y & Z-Axis to maximise rigidity
- Turcite B coated X & Y Axis slide-ways reduces friction for smooth operation
- Meehanite casting for high strength & minimal deformation
- Quality electrics & overload protection in an easy access enclosure
- Horizontal travelling ram mounted on a rotating base allowing repositioning of spindle
- The ram incorporates a tail lug (spigot) to accept a slotting attachment etc.
- High / neutral and low gear selection lever to maximise torque
- X & Y-Axis power-feed with adjustable micro switch feed stops
- Powered elevating motor for Z-Axis

## Product Brochure For M596D

- Micro switch on the manual knee handle for additional operator safety
- Metric dial graduations @ 0.02mm for X , Y & Z-Axis
- Automatic quill feed 0.038, 0.076, 0.152mm/rev
- Automatic cut off depth stop on quill
- Oil lubrication pump and reservoir
- Slide-way covers Y & Z-Axis
- Mill head tilts to  $\pm 45^\circ$  forward and back
- Mill head tilts to  $\pm 90^\circ$  left and right
- Manual quick action quill lever
- Mechanical spindle brake
- Tool box and manual

### Includes

- 3 Axis digital readout fitted
- One-shot oil lubrication pump and reservoir
- Drawbar M16 thread
- Coolant system
- Slideway covers
- X-Axis power-feed
- Y-Axis power-feed
- Z-Axis powered elevating motor
- LED work light
- Safety cutter guard
- Swarf tray

### Specific Features



Control Panel



Safety Milling Guard



Head Right View



Head Left View



Universal Tilting and Rotating Head



Adjustable Swivel and Sliding Ram



Tail Lug Spigot Supports Slotting Head



X Axis Power Feed with Rapid

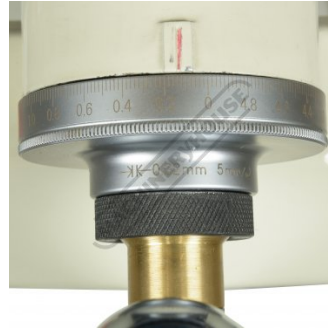
Product Brochure For M596D



X Axis Dial



Y Axis Power Feed with Rapid



Y Axis Dial



Z Axis Dial



Z Axis Rapid Motor



Lubrication Pump



Work Light and Coolant Hose



Machine Vice



Clamp Kit



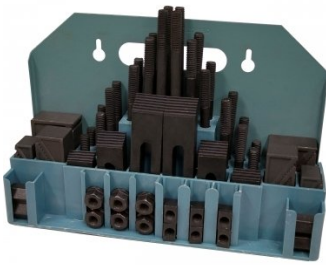
Left View

Product Brochure For M596D

**Recommended Accessories**

C0966

Clamp Kit 58 piece - Workshop Series



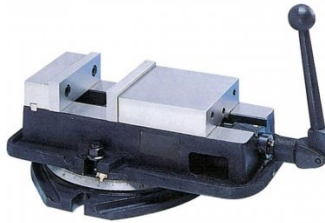
V106

Vertex K-Type Milling Vice



V306

Vertex Anglock Machine Vice



C929

Collet & Chuck Set - 20 Piece



C966

Collet & Chuck Set - 25 Piece



M350

10pc Metric HSS Milling Cutter Set 4-10mm



M360

10pc Metric HSS Milling Cutter Set 10-20mm



M184

Precision Boring Head



Product Brochure For M596D

**M185**  
 Precision Universal Facing &  
 Boring Head



**M197A**  
 Boring Head Shank



**M181**  
 Boring Bar Set - 12 piece



**M181A**  
 Boring Bar Set - 4 piece



**C292**  
 Industrial Drill Chuck - Keyless  
 Type



**D446**  
 NT40 x JT6 Drill Chuck Arbor -  
 M16 Threaded Shank



**C294**  
 Industrial Drill Chuck - Keyless  
 Type



**D448**  
 NT40 x JT3 Drill Chuck Arbor -  
 M16 Threaded Shank



**M260**  
 Precision Metric 1-2-3 Block Set



**M250**  
 Parallel Set - 8 Piece



**M252**  
 Parallel Set - 18 Piece



**R008**  
 Vertex Rotary Table



Product Brochure For M596D

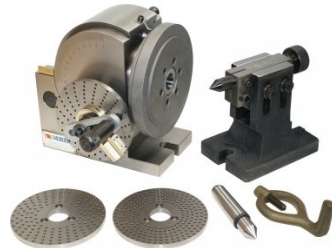
R010

Vertex Rotary Table



D002

Vertex Dividing Head - Semi Universal



C2806

3 Jaw Self Centring Lathe Chuck



R002

Vertex Super Indexing Head



M512

Face Mill 90° - Positive Rake



M503

Face Mill 90° - Positive Rake



M517

Face Mill 45° - Super High-Rake



M518

Face Mill 45° - Super High-Rake



L065

KYOCERA Carbide Inserts - Milling



L066

KYOCERA Carbide Inserts - Milling



M552

Face Mill Arbor



M554

Face Mill Arbor



Product Brochure For M596D

**M555**  
 Face Mill Arbor



**L059**  
 Carbide Inserts - Milling



**S090A**  
 Soluble Metal Cutting Fluid - 1  
 Litre



**S090**  
 Soluble Metal Cutting Fluid - 5  
 Litre



**S076**  
 Cutting Tool Lubricant Fluid -  
 500ml



**S077**  
 Drilling, Tapping & Cutting Tool  
 Lubricant Spray - 400g



**S075**  
 Cutting Tool Lubricant Paste -  
 200g



**S074**  
 Cutting Tool Lubricant Paste -  
 500g



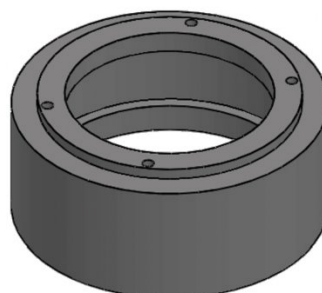
**M229**  
 Power Feed Unit



**M229S**  
 Power Feed Unit



**M224**  
 Riser Spacer - Suits Turret  
 Milling Machines



**M225**  
 Precision Slotting Head  
 Attachment



Product Brochure For M596D

**L300**  
 Magnetic Swarf Remover



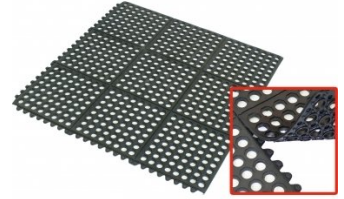
**M9991**  
 Magnetic Floor Sweeper



**M800**  
 Rubber Mat - Anti-Fatigue



**M805**  
 Rubber Mat - Anti-Fatigue



**O000**  
 SpillFix Universal Organic Absorbent



**O043**  
 Rust & Corrosion Preventive



**O042**  
 General Purpose Lubricant & Corrosion Inhibitor



**O040**  
 Rust & Corrosion Preventive



**O044**  
 Rust & Corrosion Preventive

