

Product Brochure For M597D

## Industrial Turret Milling Machine - BM-53VE

Table Travel: (X) - 890mm (Y) - 400mm (Z) - 415mm

Includes Digital Readout System, Vice & Clamp Kit

**Limited Stock**

Ex GST

Inc GST

**\$13,650.00    \$15,015.00**



ORDER CODE:	M597D
MODEL:	BM-53VE
Digital Readout:	3-Axis Digital Readout
Type:	Vertical
Table Size (mm):	1370 x 254
Column Type:	~
Spindle Taper - Vertical:	NT40
Spindle Taper - Horizontal:	~
Longitudinal Travel (X-Axis) (mm):	890
Cross Travel (Y-Axis) (mm):	400
Vertical Travel (Z-Axis) (mm):	415
Type of Slides:	Dovetail (X), Square (Y & Z)
Ram Travel (mm):	555
Spindle to Table (mm):	465
Spindle to Base:	~
Spindle Travel / Diameter (mm):	127 / 86
Throat Depth (max.) (mm):	635
Tilting Head (Left ~ Right):	±90°
Tilting Head (Forward ~ Back):	±45°
Drilling Capacity (mm):	~
End Milling Capacity (mm):	~
Face Milling Capacity (mm):	~
Power Feed - Quill (mm/rev):	0.04 / 0.08 / 0.15
Power Feed - Longitudinal (X-Axis) (mm/min):	20 - 2000
Power Feed - Cross (Y-Axis) (mm/min):	20 - 2000
Power Feed - Vertical (Z-Axis) (mm/min):	Rapid
Table T-Slot Size (inch / mm):	16
Work Table Load Capacity (kg):	350
Spindle Speeds Vertical (No./ rpm):	Variable (50 - 3550)
Spindle Speeds Horizontal (No./ rpm):	~
Spindle Speeds - Universal Head:	~
Motor Power - Vertical Spindle (kW / hp):	3.75 / 5
Motor Power - Horizontal Spindle (kW / hp):	~
Motor Power - Universal Head:	~
Voltage / Amperage (V / amp):	415
Nett Weight (kg):	1545



### Description

Quality product representing excellent value

### Features

- 3 Axis digital readout fitted
- 5HP 415V motor with mechanical variable speed system
- NT40 Spindle taper with a chrome & ground quill
- Digital speed readout display for accurate cutter speed
- Hardened & ground work table & slide-ways
- Square construction slides for Y & Z-Axis to maximise rigidity
- Powered elevating motor for Z-Axis
- Meehanite casting for high strength & minimal deformation
- Quality electrics & overload protection in an easy access enclosure
- Horizontal travelling ram mounted on a rotating base allowing repositioning of spindle

## Product Brochure For M597D

- The ram incorporates a tail lug (spigot) to accept a slotting attachment etc.
- High / neutral and low gear selection lever to maximise torque
- X & Y-Axis power-feed with adjustable micro switch feed stops
- Micro switch on the manual knee handle for additional operator safety
- Metric dial graduations @ 0.02mm for X, Y & Z-Axis
- Automatic quill feed 0.04, 0.08, 0.15mm/rev
- Automatic cut off depth stop on quill
- Oil lubrication pump and reservoir
- Slide-way covers Y & Z-Axis
- Mill head tilts to  $\pm 45^\circ$  forward and back
- Mill head tilts to  $\pm 90^\circ$  left and right
- Manual quick action quill lever
- Mechanical spindle brake
- Tool box and manual

### Includes

- 3 Axis digital readout fitted
- Digital speed readout display
- Z-Axis powered elevating motor
- X & Y-Axis power-feeds
- One-shot oil lubrication pump and reservoir
- Machine vice (160mm)
- Clamp kit
- Drawbar M16 thread
- Coolant system
- Slideway covers
- Halogen light
- Safety cutter guard
- Swarf tray

### Specific Features



Front View



Left View



Control Panel & 3 Axis Digital Readout



Head Close Up



Variable Speed Hand Wheel



Variable Speed Digital Display



Spindle Brake Lever



Drawbar

Product Brochure For M597D



High Low Speed Range Selection Lever



Quill Feed Engage Lever



Feed Speed Selector Lever



Tail Lug Spigot Supports Slotting Head



Table Feed Limit Switches



X Axis Power Feed with Rapid



X Axis Dial Graduations



Y Axis Power Feed with Rapid



Y Axis Dial Graduations



Z Axis Handle



Z Axis Dial



Z Axis Elevating Motor



Rear Slideway Protection Cover



Manual Slideway Lubrication Pump



Work Light and Coolant Hose



Machine Vice

Product Brochure For M597D

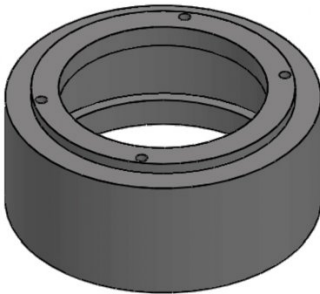


Included Accessories

**Recommended Accessories**

M224

Riser Spacer - Suits Turret Milling Machines



C091

Clamp Kit 58 piece - Workshop Series



C966

Collet & Chuck Set - 25 Piece



M3301

Metric HSS Slot Drill & End Mill Set - 10 Piece



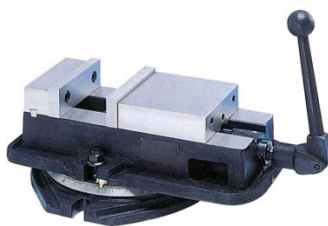
M3321

Imperial HSS Slot Drill & End Mill Set - 10 Piece



V306

Vertex Anglock Machine Vice



M184

Precision Boring Head



M185

Precision Universal Facing & Boring Head



Product Brochure For M597D

**M197A**  
 Boring Head Shank



**M181**  
 Boring Bar Set - 12 piece



**M181A**  
 Boring Bar Set - 4 piece



**C292**  
 Industrial Drill Chuck - Keyless Type



**C294**  
 Industrial Drill Chuck - Keyless Type



**D446**  
 NT40 x JT6 Drill Chuck Arbor - M16 Threaded Shank



**D448**  
 NT40 x JT3 Drill Chuck Arbor - M16 Threaded Shank



**M252**  
 Parallel Set - 18 Piece



**R008**  
 Vertex Rotary Table



**R010**  
 Vertex Rotary Table



**D002**  
 Vertex Dividing Head - Semi Universal



**C2806**  
 3 Jaw Self Centring Lathe Chuck



Product Brochure For M597D

**R002**  
 Vertex Super Indexing Head



**M512**  
 Face Mill 90° - Positive Rake



**M503**  
 Face Mill 90° - Positive Rake



**M517**  
 Face Mill 45° - Super High-Rake



**M518**  
 Face Mill 45° - Super High-Rake



**L065**  
 KYOCERA Carbide Inserts - Milling



**L066**  
 KYOCERA Carbide Inserts - Milling



**M552**  
 Face Mill Arbor



**M554**  
 Face Mill Arbor



**M555**  
 Face Mill Arbor



**M250**  
 Parallel Set - 8 Piece



**L059**  
 Carbide Inserts - Milling



Product Brochure For M597D

**S090A**  
 Soluble Metal Cutting Fluid - 1  
 Litre



**S090**  
 Soluble Metal Cutting Fluid - 5  
 Litre



**M229**  
 Power Feed Unit



**M2295**  
 Power Feed Unit



**M225**  
 Precision Slotting Head  
 Attachment



**L300**  
 Magnetic Swarf Remover



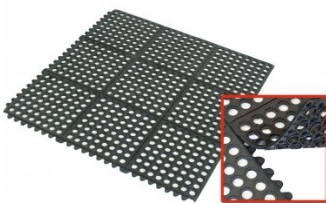
**M9991**  
 Magnetic Floor Sweeper



**M800**  
 Rubber Mat - Anti-Fatigue



**M805**  
 Rubber Mat - Anti-Fatigue



**O000**  
 SpillFix Universal Organic  
 Absorbent



**O043**  
 Rust & Corrosion Preventive



**O042**  
 General Purpose Lubricant &  
 Corrosion Inhibitor



Product Brochure For M597D

---

O040

Rust & Corrosion Preventive

O044

Rust & Corrosion Preventive

