

Product Brochure For M599D

## Industrial Turret Milling Machine - BM-63VE

Table Travel: (X) - 890mm (Y) - 400mm (Z) - 400mm

Includes Ballscrews X & Y Axis, Digital Readout System, Machine Vice & Clamp Kit

**On Sale**

Ex GST	Inc GST
<b>\$15,950.00</b>	<b>\$17,545.00</b>
<b>\$14,950.00</b>	<b>\$16,445.00</b>



ORDER CODE:	M599D
MODEL:	BM-63VE
Digital Readout:	3-Axis Digital Readout
Type:	Vertical
Table Size (mm):	1370 x 254
Column Type:	~
Spindle Taper - Vertical:	NT40
Spindle Taper - Horizontal:	~
Longitudinal Travel (X-Axis) (mm):	890
Cross Travel (Y-Axis) (mm):	400
Vertical Travel (Z-Axis) (mm):	400
Type of Slides:	Dovetail (X), Square (Y&Z)
Ram Travel (mm):	550
Spindle to Table (mm):	450
Spindle to Base:	~
Spindle Travel / Diameter (mm):	127 / 105
Throat Depth (max.) (mm):	740
Tilting Head (Left ~ Right):	±90°
Tilting Head (Forward ~ Back):	±45°
Drilling Capacity (mm):	~
End Milling Capacity (mm):	~
Face Milling Capacity (mm):	~
Power Feed - Quill (mm/rev):	0.04 / 0.08 / 0.15
Power Feed - Longitudinal (X-Axis) (mm/min):	20 - 2000
Power Feed - Cross (Y-Axis) (mm/min):	20 - 2000
Power Feed - Vertical (Z-Axis) (mm/min):	Rapid
Table T-Slot Size (inch / mm):	16
Work Table Load Capacity (kg):	400
Spindle Speeds Vertical (No./ rpm):	Variable (50 - 3550)
Spindle Speeds Horizontal (No./ rpm):	~
Spindle Speeds - Universal Head:	~
Motor Power - Vertical Spindle (kW / hp):	3.75 / 5
Motor Power - Horizontal Spindle (kW / hp):	~
Motor Power - Universal Head:	~
Voltage / Amperage (V / amp):	415
Nett Weight (kg):	1555

### Features

- 3 Axis digital readout fitted
- 5HP 415V motor with mechanical variable speed system
- NT40 Spindle taper with a 105mm chrome & ground quill
- Hardened ballscrew X & Y-Axis providing smooth and accurate operation
- Digital speed readout display for accurate cutter speed
- Hardened & ground work table & slide-ways
- Square construction slides for Y & Z-Axis to maximise rigidity
- Powered elevating motor for Z-Axis
- Meehanite casting for high strength & minimal deformation
- Quality electrics & overload protection in an easy access enclosure
- Horizontal travelling ram mounted on a rotating base allowing repositioning of spindle
- The ram incorporates a tail lug (spigot) to accept a slotting attachment etc.

## Product Brochure For M599D

- High / neutral and low gear selection lever to maximise torque
- X & Y-Axis power-feed with adjustable micro switch feed stops
- Micro switch on the manual knee handle for additional operator safety
- Metric dial graduations @ 0.02mm for X , Y & Z-Axis
- Automatic quill feed 0.04, 0.08, 0.15mm/rev
- Automatic cut off depth stop on quill
- Oil lubrication pump and reservoir
- Slide-way covers Y & Z-Axis
- Mill head tilts to  $\pm 45^\circ$  forward and back
- Mill head tilts to  $\pm 90^\circ$  left and right
- Manual quick action quill lever
- Mechanical spindle brake
- Tool box and manual

### Includes

- 3 Axis digital readout fitted
- Hardened ballscrew X & Y-Axis
- Digital speed readout display
- One-shot oil lubrication pump and reservoir
- X & Y-Axis power-feed
- Z-Axis powered elevating motor
- Machine vice 160mm
- Clamp kit set
- Drawbar M16 thread
- Coolant system
- Slideway covers
- Safety cutter guard
- Halogen light
- Swarf tray
- Drawbar M16 thread

### Specific Features



Front View



Left View



Left Side View



Control Panel & 3 Axis Digital Readout



Variable Speed Hand Wheel



Variable Speed Digital Display



Spindle Brake Lever



Drawbar

Product Brochure For M599D



High Low Speed Range Selection Lever



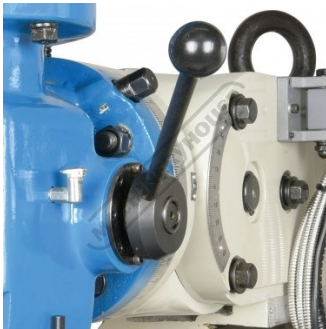
Quill Feed Engage Lever



Quill Feed Depth Stop



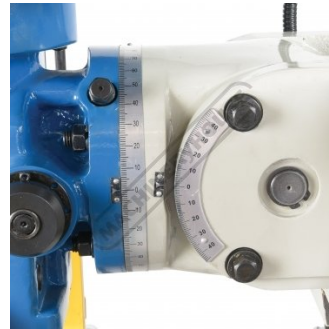
Feed Speed Selector Lever



Quill Hand Lever



Head Tilt Knuckle



Universal Tilting and Rotating Head



Adjustable Swivel and Sliding Ram



Tail Lug Spigot Supports Slotting Head



Table Feed Limit Switches



X Axis Power Feed with Rapid



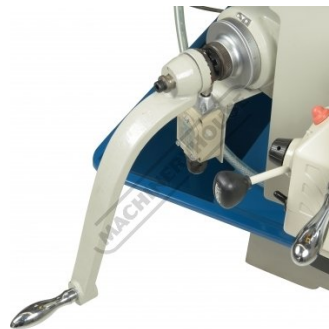
X Axis Dial Graduations



Y Axis Power Feed with Rapid



Y Axis Dial Graduations



Z Axis Handle



Z Axis Dial

Product Brochure For M599D



Z Axis Elevating Motor



Rear Slideway Protection Cover



Manual Slideway Lubrication Pump



Safety Cutter Guard



Work Light and Coolant Hose



Includes Machine Vice

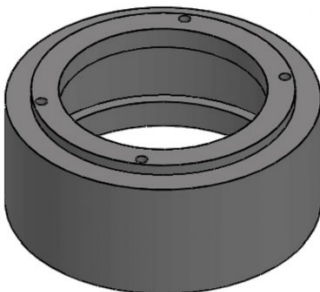


Included Accessories

**Recommended Accessories**

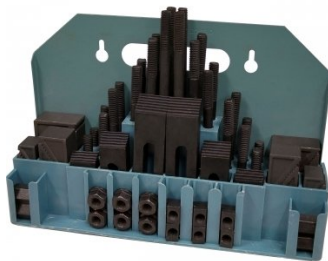
**M224**

Riser Spacer - Suits Turret Milling Machines



**C0966**

Clamp Kit 58 piece - Workshop Series



**C966**

Collet & Chuck Set - 25 Piece



**M3301**

Metric HSS Slot Drill & End Mill Set - 10 Piece

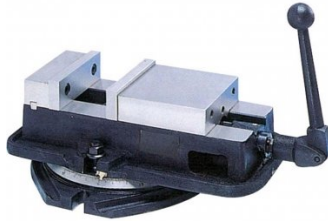


Product Brochure For M599D

**M3321**  
 Imperial HSS Slot Drill & End  
 Mill Set - 10 Piece



**V306**  
 Vertex Anglock Machine Vice



**M184**  
 Precision Boring Head



**M185**  
 Precision Universal Facing &  
 Boring Head



**M197A**  
 Boring Head Shank



**M181**  
 Boring Bar Set - 12 piece



**M181A**  
 Boring Bar Set - 4 piece



**C292**  
 Industrial Drill Chuck - Keyless  
 Type



**C294**  
 Industrial Drill Chuck - Keyless  
 Type



**D446**  
 NT40 x JT6 Drill Chuck Arbor -  
 M16 Threaded Shank



**D448**  
 NT40 x JT3 Drill Chuck Arbor -  
 M16 Threaded Shank



**M252**  
 Parallel Set - 18 Piece



Product Brochure For M599D

R008

Vertex Rotary Table



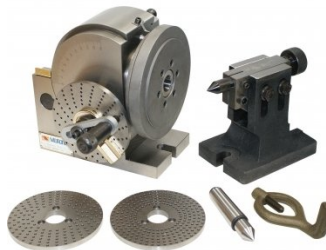
R010

Vertex Rotary Table



D002

Vertex Dividing Head - Semi Universal



C2806

3 Jaw Self Centring Lathe Chuck



R002

Vertex Super Indexing Head



M512

Face Mill 90° - Positive Rake



M503

Face Mill 90° - Positive Rake



M517

Face Mill 45° - Super High-Rake



M518

Face Mill 45° - Super High-Rake



L065

KYOCERA Carbide Inserts - Milling



L066

KYOCERA Carbide Inserts - Milling



M552

Face Mill Arbor



Product Brochure For M599D

**M554**  
 Face Mill Arbor



**M555**  
 Face Mill Arbor



**M250**  
 Parallel Set - 8 Piece



**L059**  
 Carbide Inserts - Milling



**S090A**  
 Soluble Metal Cutting Fluid - 1  
 Litre



**S090**  
 Soluble Metal Cutting Fluid - 5  
 Litre



**S076**  
 Cutting Tool Lubricant Fluid -  
 500ml



**S077**  
 Drilling, Tapping & Cutting Tool  
 Lubricant Spray - 400g



**S075**  
 Cutting Tool Lubricant Paste -  
 200g



**S074**  
 Cutting Tool Lubricant Paste -  
 500g



**M247**  
 Air Power Drawbar



**M229**  
 Power Feed Unit



Product Brochure For M599D

M2295  
 Power Feed Unit



M225  
 Precision Slotting Head Attachment



L300  
 Magnetic Swarf Remover



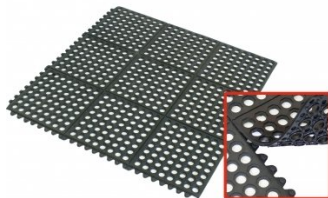
M9991  
 Magnetic Floor Sweeper



M800  
 Rubber Mat - Anti-Fatigue



M805  
 Rubber Mat - Anti-Fatigue



O000  
 SpillFix Universal Organic Absorbent



O043  
 Rust & Corrosion Preventive



O042  
 General Purpose Lubricant & Corrosion Inhibitor



O040  
 Rust & Corrosion Preventive



O044  
 Rust & Corrosion Preventive

