

Product Brochure For M604D

Industrial Turret Milling Machine - BM-30

Table Travel: (X) - 760mm (Y) - 360mm (Z) - 430mm

Includes Digital Readout System



ORDER CODE:	M604D
MODEL:	BM-30
Digital Readout:	2-Axis Digital Readout
Type:	Vertical
Table Size (mm):	1270 x 254
Column Type:	~
Spindle Taper - Vertical:	NT30
Spindle Taper - Horizontal:	~
Longitudinal Travel (X-Axis) (mm):	760
Cross Travel (Y-Axis) (mm):	360
Vertical Travel (Z-Axis) (mm):	430
Type of Slides:	Dovetail
Ram Travel (mm):	520
Spindle to Table (mm):	505
Spindle to Base:	~
Spindle Travel / Diameter (mm):	127 / 86
Throat Depth (max.) (mm):	740
Tilting Head (Left ~ Right):	±90°
Tilting Head (Forward ~ Back):	±45°
Drilling Capacity (mm):	~
End Milling Capacity (mm):	~
Face Milling Capacity (mm):	~
Power Feed - Quill (mm/rev):	0.015 / 0.04 / 0.08
Power Feed - Longitudinal (X-Axis) (mm/min):	20 - 2000
Power Feed - Cross (Y-Axis) (mm/min):	Optional
Power Feed - Vertical (Z-Axis) (mm/min):	Optional
Table T-Slot Size (inch / mm):	5/8
Work Table Load Capacity (kg):	250
Spindle Speeds Vertical (No./ rpm):	16 (80 - 5440)
Spindle Speeds Horizontal (No./ rpm):	~
Spindle Speeds - Universal Head:	~
Motor Power - Vertical Spindle (kW / hp):	2.2 / 3
Motor Power - Horizontal Spindle (kW / hp):	~
Motor Power - Universal Head:	~
Voltage / Amperage (V / amp):	415
Nett Weight (kg):	1100

Description

Manufactured in Taiwan

Features

- 2 Axis digital readout fitted
- 3HP 415V motor, 16-speeds
- NT30 Spindle taper with a chrome & ground quill
- Hardened & ground work table & slide-ways
- Turcite B coated X & Y Axis slide-ways reduces friction for smooth operation
- All slides utilise dovetail construction for maximum rigidity
- Meehanite casting for high strength & minimal deformation
- Quality electrics & overload protection in an easy access enclosure
- Horizontal travelling ram mounted on a rotating base allowing repositioning of spindle
- The ram incorporates a tail lug (spigot) to accept a slotting attachment etc.
- High / neutral and low gear selection lever to maximise torque
- Align CE-300S X-Axis power-feed with adjustable micro switch feed stops
- Coolant system, halogen light, 150mm machine vice & swarf tray

Product Brochure For M604D

- Metric dial graduations @ 0.02mm for X , Y & Z-Axis
- Automatic quill feed 0.015, 0.04, 0.08mm/rev
- Automatic cut off depth stop on quill
- Oil lubrication pump and reservoir
- Slideway covers Y & Z-Axis
- Mill head tilts to $\pm 45^\circ$ forward and back
- Mill head tilts to $\pm 90^\circ$ left and right
- Manual quick action quill lever
- Mechanical spindle brake
- Tool box and manual

Includes

- 2 Axis digital readout fitted
- One-shot oil lubrication pump and reservoir
- Drawbar M12 thread
- Coolant system
- Slideway covers
- X-Axis power-feed
- Halogen light
- Machine vice (150mm)
- Clamp kit
- Safety cutter guard
- Swarf tray

Specific Features



2 Axis Digital Readout System



Control Panel



Spindle Brake



Speed Chart



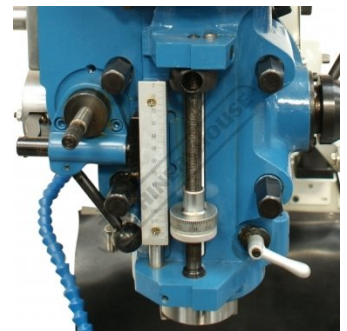
Head Controls



Head Side View



Head Side View

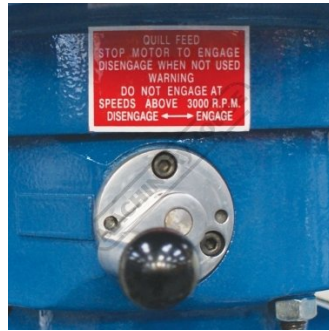


Quill Feed Depth Stop

Product Brochure For M604D



Quill Feed Engagement Lever



Feed Engage Disengage Drive



Feed Range Selector



Universal Tilting and Rotating Head



Adjustable Swivel and Sliding Ram

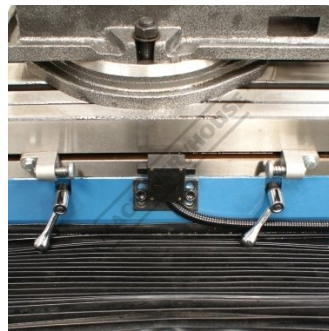


Table Feed Limit Switches



X Axis Power Feed with Rapid



Lubrication Pump



Table Handle



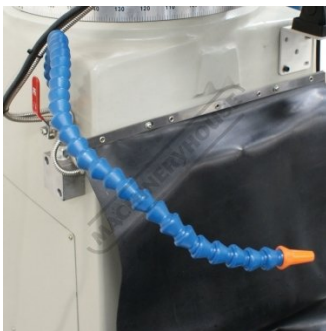
Concertina Slide Way Cover



Slide covers



Halogen Light



Coolant Nozzel



Knee Feed Handle

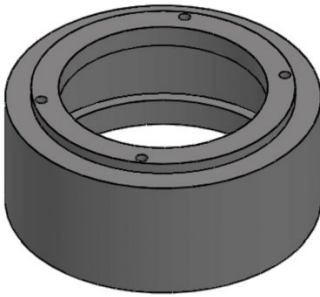


Tail Lug Spigot Supports Slotting Head

Product Brochure For M604D

Recommended Accessories

M223
 Riser Spacer - Suits Turret Milling Machines



A358
 Sky Hook Lifting Device



A358A
 Chuck Hook



L300
 Magnetic Swarf Remover



M9991
 Magnetic Floor Sweeper



M225
 Precision Slotting Head Attachment



M184
 Precision Boring Head



M197
 Boring Head Shank



Product Brochure For M604D

C290

Heavy Duty Drill Chuck - Keyed Type



C292

Industrial Drill Chuck - Keyless Type



C294

Industrial Drill Chuck - Keyless Type



D451

NT30 x JT3 Drill Chuck Arbor Type



D450

NT30 x JT6 Drill Chuck Arbor - M12 Threaded Shank



M3301

Metric HSS Slot Drill & End Mill Set - 10 Piece



M3321

Imperial HSS Slot Drill & End Mill Set - 10 Piece



C928

Collet & Chuck Set - 20 Piece



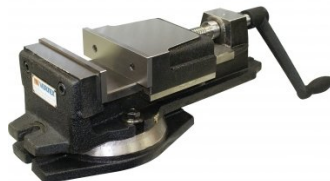
V105

Vertex K-Type Milling Vice



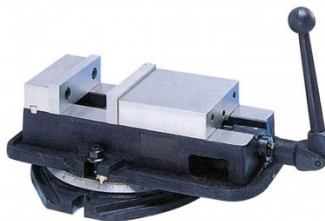
V106

Vertex K-Type Milling Vice



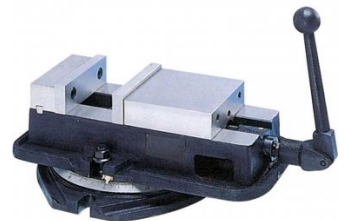
V305

Vertex Anglock Machine Vice



V306

Vertex Anglock Machine Vice



Product Brochure For M604D

R008

Vertex Rotary Table



R010

Vertex Rotary Table



D001

Vertex Dividing Head - Semi Universal



D002

Vertex Dividing Head - Semi Universal



R002

Vertex Super Indexing Head



C280

3 Jaw Self Centring Lathe Chuck



C2806

3 Jaw Self Centring Lathe Chuck



M247

Air Power Drawbar



M2295

Power Feed Unit



M229

Power Feed Unit



L065

KYOCERA Carbide Inserts - Milling



M510

Face Mill 90° - Positive Rake Milling



Product Brochure For M604D

M512
 Face Mill 90° - Positive Rake



M503
 Face Mill 90° - Positive Rake



M515
 Face Mill 45° - Super High-Rake



M517
 Face Mill 45° - Super High-Rake



M518
 Face Mill 45° - Super High-Rake



M540
 Face Mill Arbor



M542
 Face Mill Arbor



M544
 Face Mill Arbor



M545
 Face Mill Arbor



L066
 KYOCERA Carbide Inserts -
 Milling



M252
 Parallel Set - 18 Piece



M250
 Parallel Set - 8 Piece



Product Brochure For M604D

M519
End Mill - Ø12mm

M520
End Mill - Ø16mm

M521
End Mill - Ø20mm

L059
Carbide Inserts - Milling

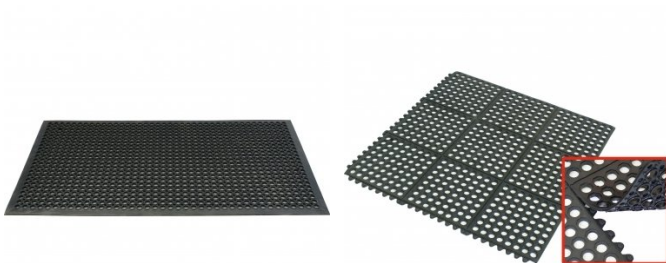


M800
Rubber Mat - Anti-Fatigue

M805
Rubber Mat - Anti-Fatigue

S090A
Soluble Metal Cutting Fluid - 1
Litre

S090
Soluble Metal Cutting Fluid - 5
Litre



S076
Cutting Tool Lubricant Fluid -
500ml

S077
Drilling, Tapping & Cutting Tool
Lubricant Spray - 400g

S075
Cutting Tool Lubricant Paste -
200g

S074
Cutting Tool Lubricant Paste -
500g



Product Brochure For M604D

O000

SpillFix Universal Organic Absorbent



O043

Rust & Corrosion Preventive



O042

General Purpose Lubricant & Corrosion Inhibitor



O040

Rust & Corrosion Preventive



O044

Rust & Corrosion Preventive

