

Product Brochure For M646

## Opti-Mill Head Attachment - Geared & Tilting Head - BF-16AV

Electronic Variable Speeds & Dovetail Column



OPTIMUM



ORDER CODE:	M646
MODEL:	BF-16AV
Digital Readout:	Optional
Type:	Vertical
Table Size (mm):	~
Column Type:	Dovetail
Spindle Taper - Vertical:	3MT
Spindle Taper - Horizontal:	~
Longitudinal Travel (X-Axis) (mm):	~
Cross Travel (Y-Axis) (mm):	~
Vertical Travel (Z-Axis) (mm):	210
Type of Slides:	Dovetail
Ram Travel (mm):	~
Spindle to Table (mm):	~
Spindle to Base:	~
Spindle Travel / Diameter (mm):	50 / 60
Throat Depth (max.) (mm):	170
Tilting Head (Left ~ Right):	±90°
Tilting Head (Forward ~ Back):	Fixed
Drilling Capacity (mm):	16
End Milling Capacity (mm):	20
Face Milling Capacity (mm):	63
Power Feed - Quill (mm/rev):	~
Power Feed - Longitudinal (X-Axis) (mm/min):	~
Power Feed - Cross (Y-Axis) (mm/min):	~
Power Feed - Vertical (Z-Axis) (mm/min):	~
Table T-Slot Size (inch / mm):	~
Work Table Load Capacity (kg):	~
Spindle Speeds Vertical (No./ rpm):	Variable (100 - 3000)
Spindle Speeds Horizontal (No./ rpm):	~
Spindle Speeds - Universal Head:	~
Motor Power - Vertical Spindle (kW / hp):	0.5 / 0.66
Motor Power - Horizontal Spindle (kW / hp):	~
Motor Power - Universal Head:	~
Voltage / Amperage (V / amp):	240 / 10
Nett Weight (kg):	67

### Description

The BF-16AV mill head attachment is specifically designed to suit the TU-2506V & TU-3008G Optimum bench lathes; converting them into a universal combination lathe/mill when mounted together. In addition this compact setup has the advantage of that it requires less valuable floor space than the two separate conventional machines.

### Features

- Electronic infinitely variable speed (100-3000rpm)
- Tilting head to ±90° from vertical
- 3MT spindle taper
- Adjustable dovetail slideway on Z-Axis
- Heavy duty cast iron body and base for better stability
- 2-speed gearbox (high/low) drive system to maximise torque
- IP54 with low-voltage release switch
- Scale collars for all axis are adjustable
- Adjustable drill length stop
- Metric dial graduations

Note: The lathe rear splash tray is required to be removed to fit Mill Head Attachment

## Product Brochure For M646

### Includes

- 3MT x JT6 drill chuck arbor
- Safety cutter guard
- Bracket kit for optional digital readout
- 1/2" x 12tpi whitworth drawbar

### Specific Features



Control Panel with Variable Spindle Speed



Swivel Head Lock



High Low Geared Drive



Dovetail Column



Z-Axis Scale



Z-Axis Hand Wheel



Quill Handle



Quill Lock



Drawbar



Safety Guard

Product Brochure For M646

**Recommended Accessories**

L689  
 Opti-Turn Bench Lathe



L691  
 Opti-Turn Bench Lathe



Stand Sold Separately

L690  
 Lathe Stand



D695  
 3-Axis Optimum Digital Readout Counter - 1µm



D694  
 1500mm Optimum Magnetic Digital Readout Scale



D697  
 Optimum Magnetic Digital Readout Reader Head



T773  
 Industrial Mobile Tooling Cabinet Workstation



C926  
 Collet & Chuck Set - 20 Piece



Product Brochure For M646

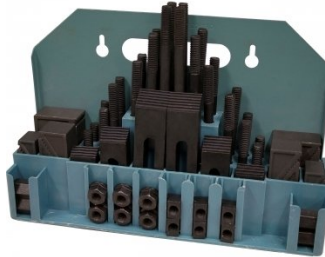
**C922B**  
 Collet & Chuck Set - 8 Piece



**C0948**  
 Mini Clamp Kit 10 piece -  
 Workshop Series



**C0945**  
 Clamp Kit 58 piece - Workshop  
 Series



**V104**  
 Vertex K-Type Milling Vice



**M3301**  
 Metric HSS Slot Drill & End Mill  
 Set - 10 Piece



**M3321**  
 Imperial HSS Slot Drill & End  
 Mill Set - 10 Piece



**M3280**  
 13mm HSS End Mill Long  
 Series



**M182**  
 Precision Boring Head Kit



**M192**  
 Boring Head Shank



**M180**  
 Boring Bar Set - 9 piece



**M250**  
 Parallel Set - 8 Piece



**M530**  
 Universal Milling Kit - 4 Piece



Product Brochure For M646

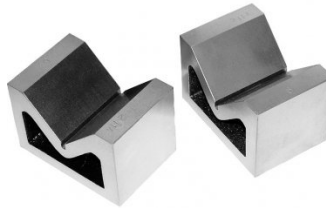
**M528**  
 Face Mill 90° - Positive Rake



**L066**  
 KYOCERA Carbide Inserts - Milling



**V004**  
 Cast Iron Vee Block



**R001**  
 Rotary Table



**R0014**  
 Tilting Rotary Table



**P235**  
 Coolant Pump & Tank



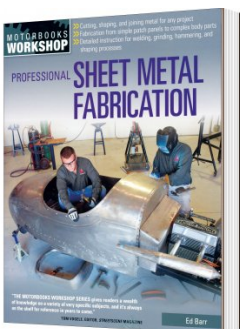
**S090A**  
 Soluble Metal Cutting Fluid - 1 Litre



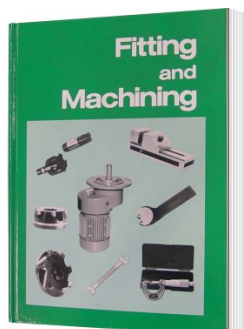
**S090**  
 Soluble Metal Cutting Fluid - 5 Litre



**L3455**  
 Professional Sheet Metal Fabrication Book



**L341**  
 Fitting and Machining Technical Book



**L300**  
 Magnetic Swarf Remover



**M9991**  
 Magnetic Floor Sweeper

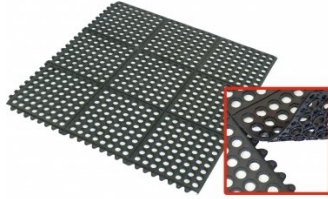


Product Brochure For M646

**M800**  
 Rubber Mat - Anti-Fatigue



**M805**  
 Rubber Mat - Anti-Fatigue



**O000**  
 SpillFix Universal Organic Absorbent



**O043**  
 Rust & Corrosion Preventive



**O042**  
 General Purpose Lubricant & Corrosion Inhibitor



**O040**  
 Rust & Corrosion Preventive



**O044**  
 Rust & Corrosion Preventive

