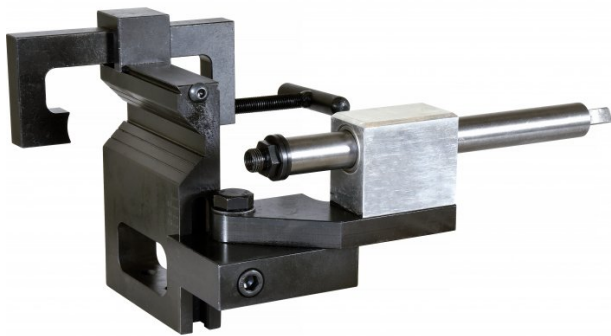


Product Brochure For P092

## Offset Pipe & Tube Notcher - PNP-3/4-3"

Adjustable Cutting Angle Up To 50°



**On Sale**

Ex GST	Inc GST
<del>\$220.00</del>	<del>\$242.00</del>
<b>\$200.00</b>	<b>\$220.00</b>

ORDER CODE:	P092
MODEL:	PNP-3/4-3"
Machine (Type):	Pipe & Tube & Notcher Attachment
Notching Cutter (Type):	Hole Saw (Optional) Thread 1/2" x 20tpi, 5/8"
Tube Capacity (OD) - Mild Steel (mm):	Ø25 - Ø75
Pipe Capacity (NB) - Mild Steel (inch / mm):	~
Angle Adjustment (Degree):	0 - 50°
End Mill Size (inch / mm):	~
Belt Size (mm):	~
Belt Speed:	~
Cutting Speed (rpm):	~
Motor Power (kW / hp):	~
Voltage (V):	~
Dimensions ((mm)):	280 x 180 x 100
Nett Weight (kg):	10



### Description

Accurately notches tubes and pipe from 0- 50° with the additional ability to offset the notch +/- 25mm from the centre line.  
 Solid steel construction with needle roller bearing to ensure smooth operation  
 Clamp in a vice or bolt to a table and use with any hand held drill  
 Notch pipes and tubes with a OD from 19mm to 76.2mm (3/4-3")

### Features

- The cutter centreline is height adjustable to accommodate a wide variety of workpieces
- Adjust cutting angle up to 50°
- Works with a 12mm chuck Power Drill
- Accepts hole saw thread sizes: 1/2" x 20tpi, 5/8" x 18tpi
- 25mm steel shaft

### Optional Accessories

- (D102) - Hole Saw Kit

Product Brochure For P092

**SETUP WITH 1/2" SHAFT ARBOR**



**SETUP WITH 5/8" ADAPTOR**



**Specific Features**



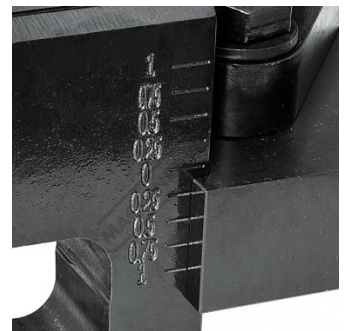
Shaft Setup



Set Up



Set Height



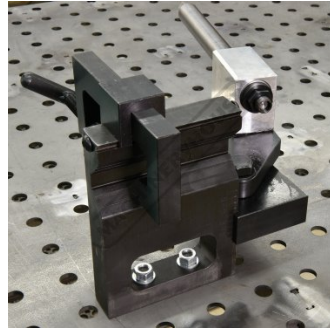
Adjustable Tool Height Setting

Product Brochure For P092

---



Adjustable Cutting Angle Up to 50 Degrees



Mounted To Bench

**Recommended Accessories**

K4012

Offset Pipe & Tube Notcher &  
Hole Saw Package Deal



D102

Metric HSS Hole Saw Set

