

Product Brochure For P142

## Workshop Hydraulic Press - 20 Tonne - HP-20PP

High Strength Steel Construction

Includes Adjustable Sliding Cylinder Ram, Pressure Gauge & Bending Vee Plates

**On Sale**

Ex GST

**\$520.00**

**\$470.00**

Inc GST

**\$572.00**

**\$517.00**



ORDER CODE:	P142
MODEL:	HP-20PP
Pressing Capacity (Tonne):	20
Hydraulic Ram Operation (Type):	Manual Hand Lever
Sliding Ram (left-right) (Yes / No):	Yes
Width Between Front Posts (mm):	541
Width Between Side Posts (mm):	85
Table Top Opening - (Front to Back) (mm):	105
Ram To Table (Max.) (mm):	980
Cylinder Stroke (mm):	185
Ram Diameter (mm):	Ø48
Piston Diameter (mm):	Ø60
Minimum Air Flow Rate required (L/Min):	~
Motor Power (kW / hp):	~
Voltage (V):	~
Floor Space (W x D x H) (mm):	1100 x 800 x 1780
Nett Weight (kg):	114.5

METALMASTER



### Description

The Metalmaster HP-20PP 20 tonne workshop press has a variety of uses, ideal for removing and installing bushes, ball joints, bearings, gears, pulleys etc. The HP-20PP also has the added feature of a sliding head which can be moved to the side allowing for those offset pressing jobs.

The 20 tonne hydraulic ram and pump unit are also easily removed for use on other pressing jobs outside your workshop such as straightening or bending. The press is supplied with a pressure gauge, two heavy duty pressing plates and is constructed from industrial grade C channel making it ideal for mechanics or the serious home workshop.

### Features

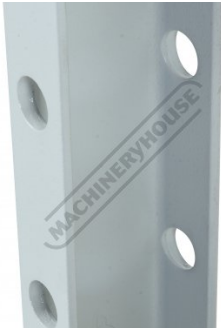
- Ideal for removing and installing - Bushing, Ball-joints, Bearings, Gears, Pulleys, etc
- Heavy duty construction with head, table and uprights all made from heavy C channel steel
- Hydraulics assembled in a temperature controlled clean room for maximum quality
- Hydraulics individually factory tested prior to shipping.
- Adjustable sliding head up to 395mm travel between the vertical post
- 20 tonne hydraulic ram and hand pump, easily removed for use on other pressing jobs
- Metric / imperial pressure gauge included

### Includes

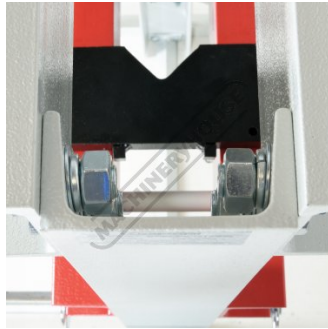
- Complete with bending plates

Product Brochure For P142

**Specific Features**



Solid Side Channel Frame



Solid Channel Frame



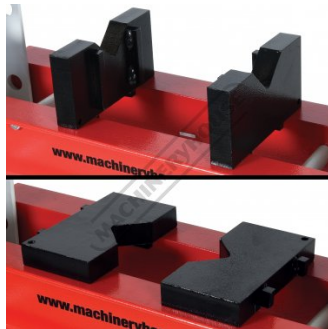
High Quality Hydraulics



Metric / Imperial Pressure Gauge



Table Pins With Safety Clips



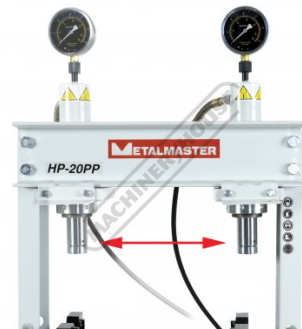
Dual Purpose Pressing Blocks



Sliding Ram With Handle



Includes Removable Ram Top Cap



Horizontal Sliding Ram



Left View



Front View



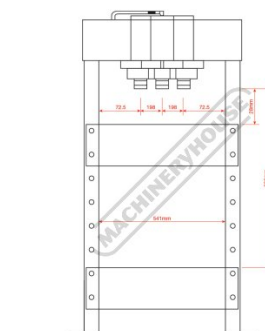
Rear View



Right Side View



Left Side View



Dimensions

Product Brochure For P142

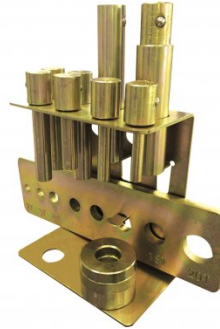
**Recommended Accessories**

**P030**  
 Bush Driver Set - 17 piece

**P031**  
 Bearing Race & Seal Driver Set - 10 piece

**P1401**  
 Steel Press Pin Driver Set - 11 piece

**P450**  
 Pressbrake Attachment - Suits Hydraulic Presses



**O002**  
 Superdraulic ISO 46 Hi Temp Hydraulic Oil

**O004**  
 Superdraulic ISO 46 Hi Temp Hydraulic Oil

