

Product Brochure For P6133

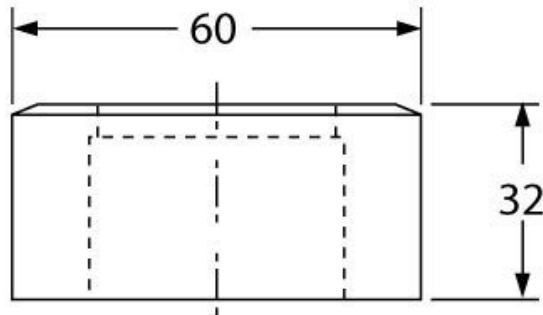
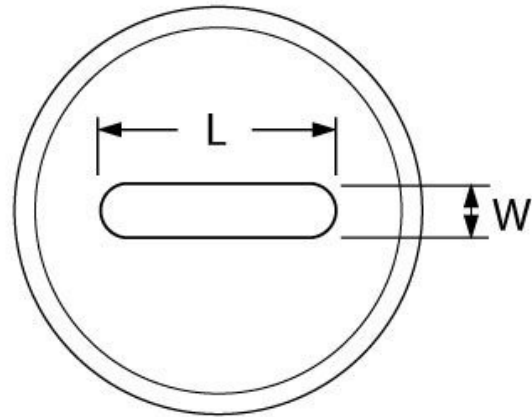
## 17.2 x 31.2mm Slotted Die

Hi -Grade Tool Steel Imported From Japan  
 Ø60mm Outside Body Diameter

Ex GST  
**\$130.00**

Inc GST  
**\$143.00**

ORDER CODE:	P6133
Shape - Type:	Slotted Die - 0D2
Square or Slot Hole Size (W x L) (mm):	17.2 x 31.2
Punch Locating Diameter x Length (mm):	~
Die Outside Body Diameter x Height (mm):	Ø60 x 32mm



### Description

Punch and Dies are Manufactured by Sunrise in Taiwan using Hi -Grade Tool Steel imported from Japan. The manufacturing process involves machining via hi tech CNC machines lathes & mills, vacuum heat treatment with multiple tempering at high temperatures before a final quality inspection/testing process all of which ensures an accurate, precise, durable & stable product.

### Features

- PLEASE NOTE FOLLOWING RECOMMENDATIONS WHEN SELECTING DIE CLEARANCE:
- Material Thickness - 2 ~ 4mm = Die Clearance 0.2mm
- Material Thickness - 4 ~ 9.5mm = Die Clearance 0.7mm
- Material Thickness - 10 ~ 14.5mm = Die Clearance 1.2mm
- Material Thickness - 15 ~ 19.5mm = Die Clearance 1.7mm
- Material Thickness - 20 ~ 24mm = Die Clearance 2.2mm

Product Brochure For P6133

---

**Specific Features**



Bottom View

**Recommended Accessories**

P6131

16 x 30mm Slotted Punch

