

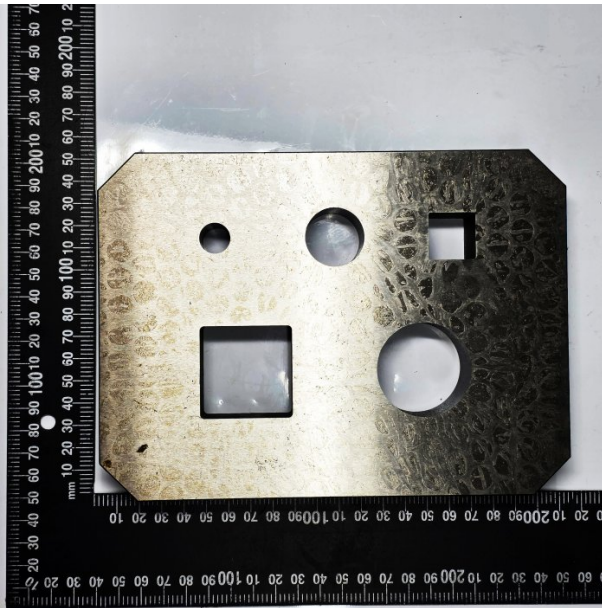
Product Brochure For PP495

BAR SHEAR ST BLD

IW-60S P174

Ex GST
\$848.93

Inc GST
\$933.82



ORDER CODE:	PP495
MODEL:	~
Punching Pressure (Tonne):	~
Punching Table Type:	~
Punching (Diameter x Thickness) - MS (mm):	~
Punching Throat Depth (mm):	~
Punching Maximum Stroke Length (mm):	~
Punching Cycles (15mm Stroke) - MS (cpm):	~
Punching Work Table Height (mm):	~
Flat Bar Shear (W x Thickness) - MS (mm):	~
Flat Bar Shear - Blade Length - MS (mm):	~
Flat Bar Shear Work Table Height (mm):	~
Angle Shear 90° - MS (mm):	~
Angle Shear 45° - MS (mm):	~
Angle Flange Trim (mm):	~
Angle Shear Work Table Height (mm):	~
Round Solid Bar Shear - MS (mm):	~
Square Solid Bar Shear - MS (mm):	~
Solid Bar Shear Work Table Height (mm):	~
Notching - Rectangle - MS (mm):	~
Notching Work Table Height (mm):	~
Multi Vee Die Block (mm):	~
Vee Opening Sizes (mm):	~
Max. Tonne Capacity (T):	~
Bending Work Table Height (mm):	~
Motor Power (kW / hp):	~
Voltage / Amperage (V / amp):	~
Nett Weight (kg):	~