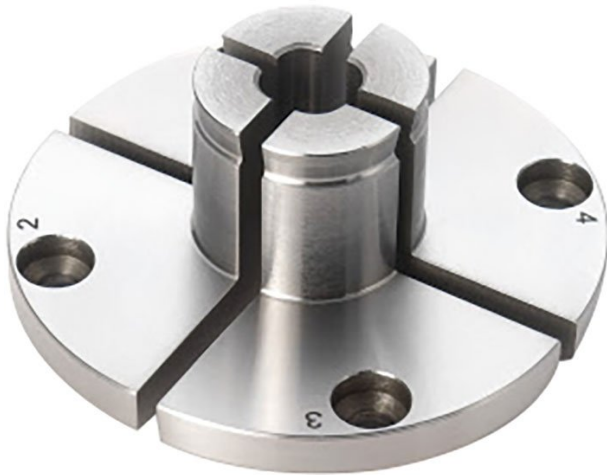


Product Brochure For R8184

Pin Jaws with 9mm Bore - 62327

Suits SC3 & SC4 Scroll Chucks



ORDER CODE:	R8184
MODEL:	62327
Type:	Pin Jaws
No. of Piece:	~
Size:	9mm Bore
Internal Thread:	~
External Thread:	~
Suits:	SC3 & SC4 Scroll Chuck

RECORD POWER



Description

62327 Pin Jaws with 9mm Bore

Our new pin jaws have been improved by squaring the external shoulder to allow work-pieces to properly register against the back of the jaws. This is ideal for use in expansion, to grip tubes in work pieces such as pepper or salt grinders. We have also reduced the internal diameter to 9 mm, making it ideal for making finials or lace bobbins - Thereby increasing its versatility. This set is ideal for miniature turning and to grip work-pieces internally without excessive damage or marking.

Features

- Expansion: 25 - 45mm
- Contraction Spigot: 9 - 28mm
- Contraction Square: 7 - 27mm