

Product Brochure For S120

## Semi-Automatic Ferrous Cutting Cold Saw - SA350

135 x 85mm Rectangle Capacity

Ø350mm Blade, Pneumatic Vice Clamp, Variable Blade Speed  
 20~100rpm

**Ex GST**                      **Inc GST**  
**\$16,150.00**    **\$17,765.00**



ORDER CODE:	S120
MODEL:	SA350
Cutting Head Action:	Semi-Automatic
Operation Type:	Swivel - Dual Mitre
Round Capacity @ 90° / 45° (mm):	115 / 110
Square Capacity @ 90° / 45° (mm):	110 / 85
Rectangle Capacity @ 90° / 45° (WxH) (mm):	135 x 85 / 95 x 75
Blade Size - Diametre. x Bore (Ø) (mm):	350 x 40
Vice Clamping Fixture:	Pneumatic Vice
Coolant System:	Yes
Table Working Height (with Stand) (mm):	968
Blade Speed (rpm):	Variable 20~100
Motor Power (kW / hp):	2.2 / 3
Voltage / Amperage (V / amp):	415
Nett Weight (kg):	280



### Description

Features a smart, computerised actuation motor that alleviates the repetitious cutting process without compromising cutting capabilities and features of the ferrous saw range. With the ability to adjust the speed of the saw blade, this machine is ideal for working with a variety of materials at varying levels of thickness. This allows for clean, precise cuts without the risk of burning or overheating the material, variable speed reduces blade wear, extending the life of the saw blade.

### Features

- 20 – 100 RPM Variable Speed
- Mitering locking device stops at 45° left, straight 90°, and 45° right
- Fully integrated coolant system provided on all machines
- Spindle and drive unit immersed in oil solution and enclosed within gearbox housing for smooth performance and reduced machine wear
- Every unit is provided with a high speed steel blade for general purpose cutting of ferrous solid and tube profiles
- Industrial lead-screw unit incorporated with a smart actuation motor which automates the cutting cycle for the operator
- Smart auto-detect of the cut piece size resulting in shortest stroke possible & fast cut times
- Auto feed speed adjustment through sections of varying thicknesses resulting in minimum blade wear
- Saw overload detection with feed modulation and reverse for safer operation
- Air-pneumatic vice clamp accommodates for a range of metal profiles ferrous solids and tube sections
- Brobolube standard lubricator

Product Brochure For S120

Specific Features



Right View

Recommended Accessories

S092  
 BROBOLUBE Industrial  
 Gearbox Oil



S136A  
 HSS Cold Saw Blade



S136B  
 HSS Cold Saw Blade



S136C  
 HSS Cold Saw Blade



S136D  
 HSS Cold Saw Blade



S136E  
 HSS Cold Saw Blade



S136F  
 HSS Cold Saw Blade



S137  
 HSS + COBALT Cold Saw  
 Blade



Product Brochure For S120

**S137A**  
 HSS + COBALT Cold Saw  
 Blade



**S137B**  
 HSS + COBALT Cold Saw  
 Blade



**S137C**  
 HSS + COBALT Cold Saw  
 Blade



**S137D**  
 HSS + COBALT Cold Saw  
 Blade



**S137E**  
 HSS + COBALT Cold Saw  
 Blade



**S090A**  
 Soluble Metal Cutting Fluid - 1  
 Litre



**S090**  
 Soluble Metal Cutting Fluid - 5  
 Litre



**S091**  
 Soluble Metal Cutting Fluid - 20  
 Litre



**L300**  
 Magnetic Swarf Remover



**M9991**  
 Magnetic Floor Sweeper



**L812**  
 Roller Conveyor



**L814**  
 Roller Conveyor Stand



Product Brochure For S120

W343  
 Roller Stand



W343A  
 Roller Stand



W3434  
 Roller Stand



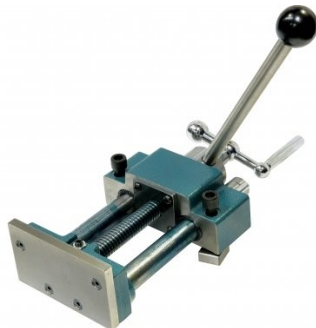
W3436  
 Roller Stand - V-Type



S093  
 Screw Retaining



S100  
 Vice



S094  
 Leadscrew Handle / Nut  
 Assembly



S096  
 Vice Nut - Brass Type



S095  
 Dowel Pin



S097  
 Love Joy Coupling



S097A  
 Insert Love Joy



S098A  
 Coolant Pump



Product Brochure For S120

**S098B**  
Coolant Pump & Conversion Kit



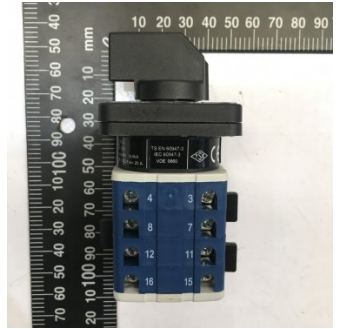
**S099A**  
Return Spring Conversion Kit



**S099B**  
Return Spring



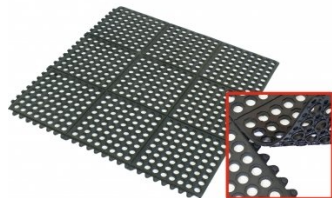
**S098**  
ON/OFF SWITCH 240V



**M800**  
Rubber Mat - Anti-Fatigue



**M805**  
Rubber Mat - Anti-Fatigue



**O000**  
SpillFix Universal Organic Absorbent



**O043**  
Rust & Corrosion Preventive



**O042**  
General Purpose Lubricant & Corrosion Inhibitor



**O040**  
Rust & Corrosion Preventive



**O044**  
Rust & Corrosion Preventive

