

Product Brochure For S534S

Manual Treadle Guillotine with Rear Safety Guard - SG-416S

1300 x 1.6mm Mild Steel Shearing Capacity
 Quality 9CrSi Blade Material Suits Stainless Steel

On Sale

Ex GST	Inc GST
\$3,650.00	\$4,015.00
\$3,390.00	\$3,729.00



ORDER CODE:	S534S
MODEL:	SG-416S
Shearing Capacity - Mild Steel (mm):	1.6
Shearing Capacity - Stainless Steel:	1
Shearing Length (mm):	1300
Floor Space (L x W x H) (mm):	1700 x 1160 x 1100
Nett Weight (kg):	520

METALMASTER



Features

- Quality steel-fabrication construction
- Blades made from 9CrSi material suitable for stainless steel
- Spring loaded material clamp beam
- Greasing & oiling points on bearing surfaces
- Adjustable blade gap clearance for thin material
- Tabs fitted to isolate machine with padlock (Please note padlock not included)
- Includes front sheet supports, backgauge & rear safety guard
- Mild steel capacity is rated on hot rolled material with 250MPA

Includes

- Fitted with rear safety guarding with screw locked access door

Product Brochure For S534S

Specific Features



Front View



Left View



Right View



Top View



Rear View



Rear Swivel Safety Guard



Manual Backgauge



Adjustable Backgauge



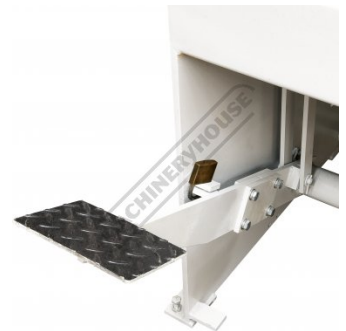
Spring Return Clamp Beam & Foot Pedal



Front Sheet Support



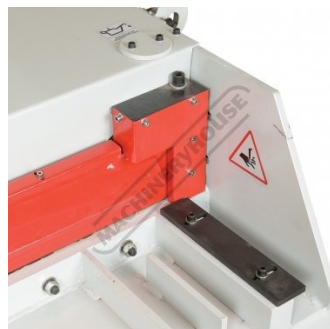
Foot Pedal Lever



Foot Pedal Lever Shown Locked with Optional Padlock



Isolation Tabs Shown Locked with Optional Padlock



Material Clamp and Squaring Edge



Oil Refil Points



Lifting Lugs

