

Product Brochure For S535

Hydraulic Guillotine - SG-420

1300 x 2mm Mild Steel Shearing Capacity

Manual Backgauge



On Sale

Ex GST	Inc GST
\$5,990.00	\$6,589.00
\$5,630.00	\$6,193.00

ORDER CODE:	S535
MODEL:	SG-420
Shearing Capacity - Mild Steel (mm):	2
Shearing Capacity - Stainless Steel (mm):	0.9
Shearing Length (mm):	1300
NC Control (Type):	~
Backgauge (Type):	Manual
Backgauge Travel (mm):	550
Pneumatic Sheet Supports:	~
Quick Action Blade Clearance Adjustment:	~
Strokes / min (SPM):	~
Blade Angle (deg):	~
Throat Depth (mm):	~
Motor Power (kW / hp):	2.2 / 3
Voltage / Amperage (V / amp):	240 / 15
Floor Space Requirements (L x W x H) (mm):	1750 x 1475 x 1110
Nett Weight (kg):	560

METALMASTER



Description

The SG-420 compact hydraulic guillotine is a machine that should be in every sheet metal fabrication shop. This 1300mm guillotine will easily cut 2mm mild steel over its full length and operates on 240 volt 15 amp single phase power. The SG-420 comes complete with an adjustable back gauge for precise repeatability. It also comes standard with a squaring arm and front sheet supports.

Features

- 1300mm x 2mm cutting capacity
- 2.2kW / 3hp 240V motor
- 880mm work table height
- Adjustable manual backgauge
- Roving foot pedal control
- Blades made from 9CrSi material suitable for cutting stainless steel
- Safety photo electric rear guarding with 3 beams
- Safety reset rear guarding button mounted to back of electrical box
- Front arm supports & squaring guide
- Mild steel capacity is rated on hot rolled material with 250MPA
- Pre-Commissioning:
 1. Guillotine is run & tested prior delivery
 2. Hydraulic oil is included with machine

Product Brochure For S535

Specific Features



Right View



Front View



Control Panel



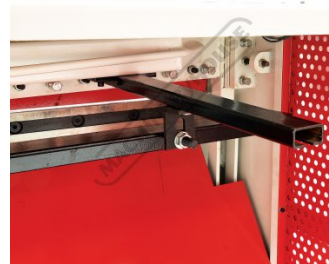
Rear Right View



Squaring Guide



Front Sheet Supports



Rear Back Gauge



3 x Rear Safety Photoelectric Sensors

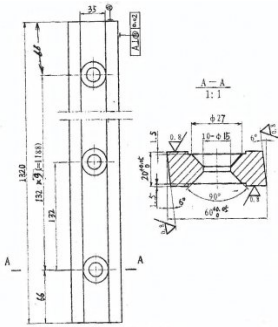


Roving Foot Pedal with Emergency Stop

Product Brochure For S535

Recommended Accessories

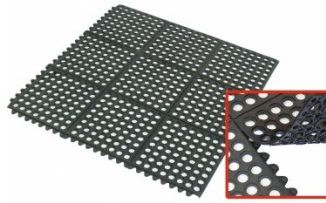
S9981
 1320mm Sheet Metal Guillotine
 Blade Set - 9CrSi



M800
 Rubber Mat - Anti-Fatigue



M805
 Rubber Mat - Anti-Fatigue



O000
 SpillFix Universal Organic
 Absorbent



O043
 Rust & Corrosion Preventive



O042
 General Purpose Lubricant &
 Corrosion Inhibitor



O040
 Rust & Corrosion Preventive



O044
 Rust & Corrosion Preventive



Product Brochure For S535

O004

Superdraulic ISO 46 Hi Temp
Hydraulic Oil

