

Product Brochure For S783

## Manual Sheet Metal Curving Rolls - RS1270x90

1270 x 2.5mm Mild Steel Capacity

Includes Wiring Grooves & Quick Action Swivel Out Top Roller

**On Sale - Special Order**

Ex GST

Inc GST

~~\$5,790.00~~

~~\$6,369.00~~

**\$5,450.00**

**\$5,995.00**



ORDER CODE:	S783
MODEL:	RS1270x90
Useful Length (mm):	1270
Capacity - Mild Steel (mm):	2.5
Minimum Rolling Diameter (mm):	135
Roll Diameter (mm):	90
Wire Groove Rolls (mm):	~
Includes Stand (No / Yes):	Yes
Nett Weight (kg):	450



### Features

- SAE 150 quality certified steel rolls with high tensile strength
- Precision ground rolls
- Cast Iron end frames
- Conical bending device
- Single handle adjustment of bottom rolls
- Includes stand
- Made in Turkey
- Mild steel capacity is rated on hot rolled material with 250MPA

Product Brochure For S783

**Specific Features**



Right View



Left View



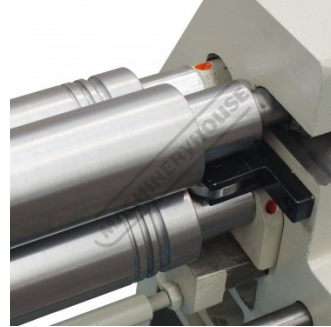
Rear View



End View



Swivel Top Roller



Rolls With Wiring Grooves



Rear Curving Roll Height Adjustment



Rear Roll Adjustment Scale



Material Thickness Adjustment



Roll Adjustment Handles