

Product Brochure For S886G

CNC Press brake DELEM DA69T - 5 Axis - APHS PRO 31200

200T x 3100mm, 5 Axis, Delem DA69T Touch Screen Control
 Includes Programmable X, Y1, Y2, V & R-Axis and Laser Guarding System

On Sale

Ex GST	Inc GST
\$135,950.00	\$149,545.00
\$129,950.00	\$142,945.00



ORDER CODE:	S886G
MODEL:	APHS PRO 31200
Control Unit (Type):	DELEM DA69T CNC
Nominal Pressure - Tonnage (Ton):	200
Nominal Pressure - Kilonewtons (kN):	2000
Length of Work Table (mm):	3100
Distance Between Columns (mm):	2550
Throat Depth (mm):	410
Maximum Open Height (mm):	540
Ram Stroke (mm):	260
Machine Axis (No.):	5
Safety Guarding System (Type):	Laser System
X Axis Backgauge Travel (mm):	750
R Axis Backgauge Travel (mm):	~
Z1 & Z2 Axis Back gauge fingers:	~
Table Bed Crowning System (Type):	CNC Controlled System
Motor Power (kW / hp):	18.5 / 25
Motor Voltage (V):	415
Floor Space (mm):	~
Nett Weight (kg):	10000



Description

Delem DA-69T CNC CONTROL UNIT

The new generation DA-Touch controls offers an even higher grade of efficiency in programming, operation and control of today's press brakes. Ease of use combined with state-of-the-art technology go hand in hand, improving productivity.

The touch screen gives access to the proven Delem user-interface and enables direct navigation between programming and production. Functions are directly located where you need them, offering optimised ergonomics throughout the application.

The DA-69T offers 2D as well as 3D programming that includes automatic bend sequence calculation and collision detection. Full 3D machine set-up with multiple tool stations giving true feedback on the product feasibility and handling.

Highly effective control algorithms optimise the machine cycle and minimise set-up time. This makes using press brakes easier, more efficient and more versatile than ever.

The OEM-panel located above the screen, reserved for machine functions and OEM application switches, is integrated in the design and can be used depending on the required application.

- 3D and 2D graphical touch screen programming mode
- 3D visualisation in simulation and production
- 17" high resolution colour TFT
- Full Windows application suite
- Delem Modusys compatibility (module scalability and adaptivity)
- USB, peripheral interfacing
- Open system architecture
- Sensor bending & correction interface

Features

- Baykal machine frames consist of a monolithic structure with hot rolled steel sheets of Fe 520 welded together. The two housings (shoulders) are obtained from the same sheet to ensure the same elasticity under stress. The ram and table are also obtained from Fe 520 steel sheets and are opportunely dimensioned to avoid deflection
- The hydraulic cylinders are manufactured from high resistance steel incorporating chromium plated & ground rods. Completed with lapped pistons to ensure longevity of the hydraulic seals
- The hydraulic unit is made by major companies in the field. It consists of electronically controlled proportional valves with independent

Product Brochure For S886G

- closed loop control of the two cylinders.
- 5 CNC Controlled Axis (Y1, Y2, X, R, V) as standard. Multi Axis available
- Full electronic Synchronisation with proportional valve technology.
- German manufactured Laser-Safe Guard System mounted at each end of machine ensuring correct interfacing and operator safety whilst in operation. Laser-safe is designed so each guard will slide up or down to allow for many different types and sizes of tooling enabling safety at the appropriate points as required by the Australian standards. Manual height adjustment with scales and lock for easy positioning.
- Sliding steel fabricated front sheet supports enabling a wide range of material sizes to be aligned and supported at the correct required width and height. This function is achieved by the precision linear guides mounted on the front apron parallel to the tooling length. This design can also be adjusted vertically to support material with return bends.
- Ram positions (Left & Right) are obtained from independent linear encoders whilst monitoring and adjusting proportional valves. This produces a double closed loop system, with guaranteed beam positioning of +/- 0.01mm (Y1 and Y2 Axis)
- Electronic control of bending parallelism is via the Delem DA-69T CNC Control
- Accuracy is further ensured by mounting the linear encoders on a C-frame connected directly to the Bed, rather than the side frames. This ensures that deflection of the side frames and uneven loads have no effect on Beam position.
- CNC Controlled Back-gauge:- X-Axis stroke 750mm with DC motor mounted on hardened and machined guides, translation via spherical recirculating ball screws
- Delem DA-69T CNC Control fully programmable with 3D & 2D graphics offline software included
- Precision linear scale measurement : HEIDENHAIN or GIVI MISURE
- Y1-Y2 - X-R CNC auto crowning table - controlled stroke axes
- CNC controlled hardened ballscrew backgauge with X-axis
- X axis range = 750mm speed = 350mm/s max.
- 2 micrometric backgauge finger stops with lateral adjustment
- Front support arms fully adjustable mounted on linear rails x 2 off easy positioning over the complete working length of the machine
- Quality Siemens Electric control switch Gear is used
- Pendant control panel centralising all Press-Brake Functions
- Foot Pedal Control, Emergency stop buttons
- 2 axis tower type backgauge with AC servo motors
- X-R CNC axis ,
- bar length 2400mm (size 200x150mm)
- "X" axes stroke 750mm
- "R" axes stroke 160mm
- 2 micro adjustable fingers with 2D stops sliding all long the bar
- Hardening on fingers
- All movements on ball screws and ball guides
- AC servo brushless motors
- "X" axis speed of 350mm/sec
- "R" axis speed 240mm/sec
- Mechanical accuracy 0.1mm
- Hydraulics: Hoerbiger & Parker (German & USA)
- Electrics: Siemens or Telemecanique (German or French)
- Scales: Misure or Heidenhain (Italian or Dutch)
- Tooling: Technostamp or Roller (Italian)
- Control: Delem DA-69T
- PLC: AKAS
- Mild steel capacity is rated on hot rolled material with 250MPA

Includes

- Delem DA-69T 3D & 2D Graphical CNC Control
- Offline graphical 3D software
- Y1-Y2 cylinder axis
- X - R Backgauge
- V - table NC auto crowning
- Quick release top tool clamping system
- AKAS Safety laser front guarding system
- Mechanical crowning on top intermediate clamps

Product Brochure For S886G

APHS PRO

The robust and reliable solution for high-quality bending results in all sheet thicknesses.

01

ACCURATE

It's rapid, accurate, and repeatable thanks to the design and hydraulic system.

02

AFFORDABLE

APHS PRO series combined with high quality and are well-priced.

03

FLEXIBLE

Wide range of lengths and tonnages are available.



Types		1254x40	2104x60	2606x90	3104x90	3106x120	3108x160	3110x200	3112x240	3116x300	3120x440	4106x160	4108x200	4110x240
Capacity	kN	400	600	900	900	1200	1600	2000	2400	3000	4400	1600	2000	2400
Motor Output	kW	4	5,5	7,5	7,5	11	15	19	22	22	30	15	18,5	22
Oil Tank Capacity	Lt	80	140	140	140	140	210	210	210	280	450	210	210	210
Speeds (mm/s)	Approach	160	150	150	160	160	160	150	130	110	80	170	160	150
	Working	10	10	10	10	10	10	10	10	8	8	10	10	10
	Return	130	130	130	130	130	130	130	120	100	70	120	110	100
Approx. Weight	Ton	3,3	5,4	7,1	7,9	8,4	9,7	10	11	15	22	12	12,5	14
Bending Length	A mm	1250	2100	2600	3100	3100	3100	3100	3100	3100	3100	4100	4100	4100
Inside Frames	B mm	1070	1600	2050	2550	2550	2550	2550	2550	2550	2550	3550	3550	3550
Side Frame Width	C mm	1470	1580	1580	1590	1590	1600	1600	1610	1815	2060	1600	1600	1610
Bed Height	G mm	800	880	880	880	880	880	880	880	905	1005	880	880	880
Daylight Opening	K mm	455	475	540	530	540	540	530	530	640	575	530	530	530
Stroke	L mm	215	210	260	260	260	260	260	260	320	320	260	260	260
Table Width	M mm	60	60	60	60	60	60	90	90	380	450	60	90	90
Throat Gap	N mm	410	410	410	410	410	410	410	410	500	500	410	410	410

Design and specifications are subject to change without notice

Product Brochure For S886G

Specific Features



Laser Guarding



CNC Table Crowning W Axis



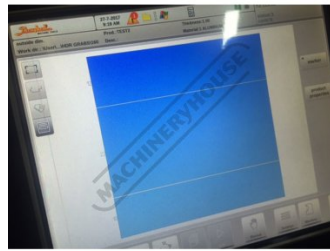
Sheet Support arms



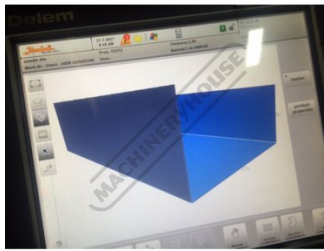
DELEM DA69T



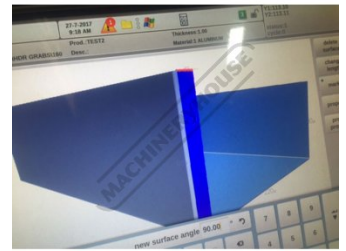
2D Drawing



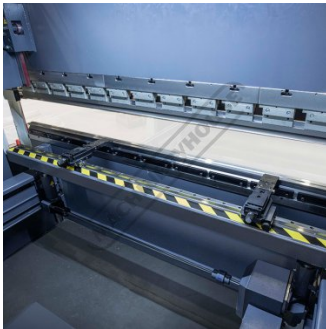
2D Model



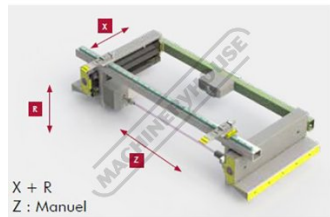
3D Bending



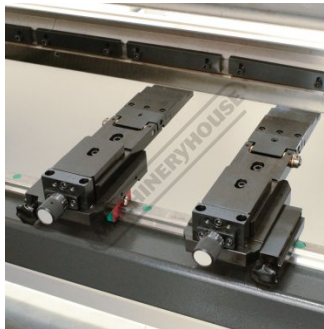
3D Bending Simulation



X R Backgauge



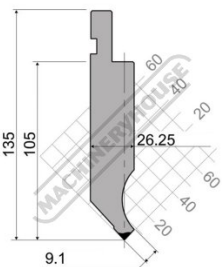
XR Backgauge



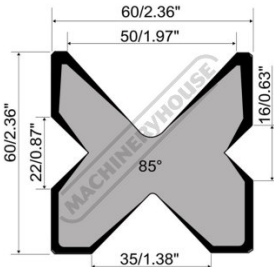
Micro Adjustment Backstop



Quick Action Clamps



Top Tooling



4V Die Block



Mobile Foot Control

Product Brochure For S886G

Recommended Accessories

S990

35° Top Punch Pressbrake Tooling



S990S

35° Top Punch Pressbrake Tooling - Segmented



S991

86° Top Punch Pressbrake Tooling



S991S

86° Top Punch Pressbrake Tooling - Segmented



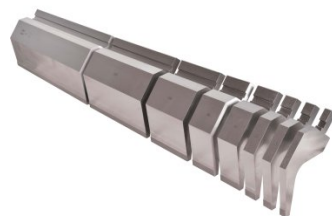
S9920

86° Top Punch Gooseneck Pressbrake Tooling



S9920S

86° Top Punch Gooseneck Pressbrake Tooling - Segmented



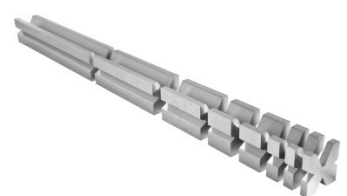
S99230

Dieblock - 4 Way 60 Degrees



S99231

Dieblock - 4 Way 60 Degrees - Segmented

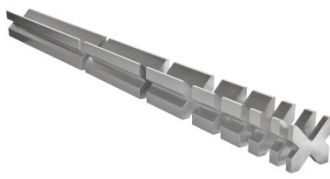


Product Brochure For S886G

S99234
 Dieblock - 4 Way 86 Degrees



S99235
 Dieblock - 4 Way 86 Degrees - Segmented



S99240
 Dieblock Heavy Duty, Single V 63mm 86 Degrees



S99242
 Dieblock Heavy Duty, Single V 80mm 86 Degrees



S99244
 Dieblock Heavy Duty, Single V 100mm 86 Degrees



Q200
 Combination Set



Q200A
 Combination Set



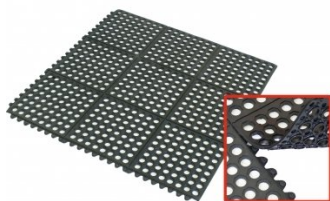
Q201
 Universal Bevel Protractor



M800
 Rubber Mat - Anti-Fatigue



M805
 Rubber Mat - Anti-Fatigue



O043
 Rust & Corrosion Preventive



O042
 General Purpose Lubricant & Corrosion Inhibitor



Product Brochure For S886G

O040
Rust & Corrosion Preventive



O044
Rust & Corrosion Preventive



O004
Superdraulic ISO 46 Hi Temp Hydraulic Oil

