

Product Brochure For S923

Hydraulic NC Guillotine - HG-460B

1300 x 6mm Mild Steel Shearing Capacity

1-Axis Ezy-Set NC-89 Controlled Backgauge & Includes Rapid Blade Adjustment

On Sale

Ex GST

Inc GST

\$15,250.00

\$16,775.00

\$14,500.00

\$15,950.00



ORDER CODE:	S923
MODEL:	HG-460B
Shearing Capacity - Mild Steel (mm):	6
Shearing Capacity - Stainless Steel (mm):	4
Shearing Length (mm):	1300
NC Control (Type):	Ezy-Set NC-89
Backgauge (Type):	Leadscrew
Backgauge Travel (mm):	700
Pneumatic Sheet Supports:	~
Quick Action Blade Clearance Adjustment:	Yes
Strokes / min (SPM):	12
Blade Angle (deg):	2°
Throat Depth (mm):	~
Motor Power (kW / hp):	5.5 / 7.5
Voltage / Amperage (V / amp):	415
Floor Space Requirements (L x W x H) (mm):	1990 x 2230 x 1312
Nett Weight (kg):	2046

METALMASTER



Features

- 1300mm x 6mm cutting capacity
 - 5.5kW / 7.5hp 415V motor
 - Ezy-Set NC-89 Go-To digital display controlled backgauge with DRO counter
 - Quick action blade clearance adjustment for shearing material 1 - 6mm
 - Hydraulic material clamping for accurate shearing
 - One shot lubrication pump & reservoir for slideway protection
 - Blades made from 9CrSi material suitable for cutting stainless steel
 - Transfer balls inserted into work table allowing larger sheets to be easily positioned to the cut position and squaring arm
 - Front sheet supports with ball bearing guides preventing material damage when setting up
 - Three safety photo electric light beams on rear guarding
 - Safety reset rear guarding button mounted to back of electrical box
 - Heavy duty under driven machine construction
 - Equipped with shadow line lighting-alignment device
 - Roving foot pedal control
 - Mild steel capacity is rated on hot rolled material with 250MPA
- Pre-Commissioning:
 1. Guillotine is run & tested prior delivery
 2. Hydraulic oil is included with machine

Product Brochure For S923

Specific Features



Right View



Rear View



NC 89 Control Panel



NC 89 Backgauge DRO



Squaring Arm with Measuring Scale



Material Transfer Balls On The Table



Front Sheet Supports with Roller Bearings



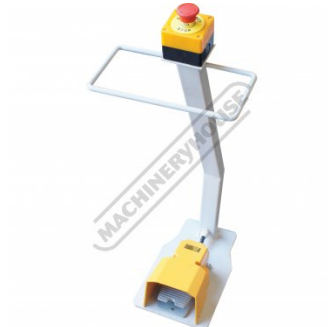
3 Safety Photo Sensors



Quick Action Blade Clearance Adjustment



One Shot Lubrication

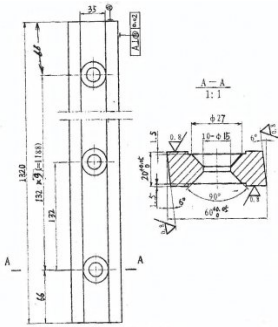


Roving Foot Pedal with Emergency Stop

Product Brochure For S923

Recommended Accessories

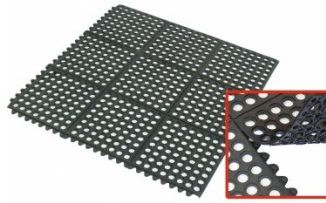
S9981
 1320mm Sheet Metal Guillotine
 Blade Set - 9CrSi



M800
 Rubber Mat - Anti-Fatigue



M805
 Rubber Mat - Anti-Fatigue



O000
 SpillFix Universal Organic
 Absorbent



O043
 Rust & Corrosion Preventive



O042
 General Purpose Lubricant &
 Corrosion Inhibitor



O040
 Rust & Corrosion Preventive



O044
 Rust & Corrosion Preventive



Product Brochure For S923

O004

Superdraulic ISO 46 Hi Temp
Hydraulic Oil

