

Product Brochure For S926

Hydraulic Guillotine - HG-840M

2500 x 4mm Mild Steel Shearing Capacity

Manual Backgauge & Includes Rapid Blade Adjustment



ORDER CODE:	S926
MODEL:	HG-840M
Shearing Capacity - Mild Steel (mm):	4
Shearing Capacity - Stainless Steel (mm):	2.5
Shearing Length (mm):	2500
NC Control (Type):	~
Backgauge (Type):	Manual
Backgauge Travel (mm):	760
Pneumatic Sheet Supports:	~
Quick Action Blade Clearance Adjustment:	Yes
Strokes / min (SPM):	12
Blade Angle (deg):	2°
Throat Depth (mm):	~
Motor Power (kW / hp):	5.5 / 7.5
Voltage / Amperage (V / amp):	415
Floor Space Requirements (L x W x H) (mm):	~
Nett Weight (kg):	2590

METALMASTER



Features

- 2500mm x 4mm cutting capacity
 - 5.5kW / 7.5hp 415V motor
 - Quick action blade clearance adjustment for shearing material 1 - 4mm
 - Hydraulic material clamping for accurate shearing
 - One shot lubrication pump & reservoir for slideway protection
 - Manual backgauge with digital scale display unit
 - Roving foot pedal control
 - Clamp beam design allows clear view to shadow line on material
 - Blades made from 9CrSi material suitable for cutting stainless steel
 - Transfer balls inserted into work table allowing larger sheets to be easily positioned to the cut position and squaring arm
 - Front sheet supports with ball bearing guides preventing material damage when setting up
 - Safety three safety photo electric light beams on rear guarding
 - Safety reset rear guarding button mounted to back of electrical box
 - Heavy duty under driven machine construction
 - Equipped with shadow line lighting-alignment device
 - Mild steel capacity is rated on hot rolled material with 250MPA
- Pre-Commissioning:
1. Guillotine is run & tested prior delivery
 2. Hydraulic oil is included with machine

Product Brochure For S926

Specific Features



Front View



Control Panel



Cut Stroke Adjustment Dial



Quick Action Blade Clearance Adjustment Operation



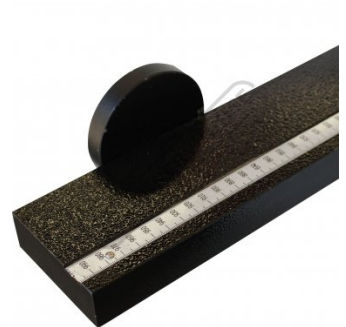
Quick Action Blade Clearance Adjustment Swivel Handle



Quick Action Blade Clearance Adjustment



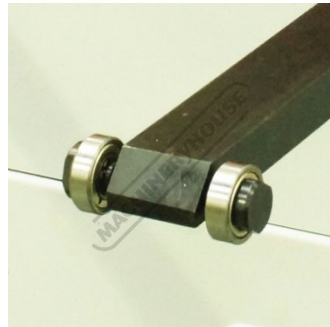
Squaring Arm



Squaring Arm with Measuring Scale



Front Sheet Supports



Front Sheet Supports with Roller Bearings



Material Transfer Balls on the Table



Manual Back Gauge



Backgauge with Digital Readout



Backgauge Scale for Digital Readout



Backgauge Digital Readout



3 Safety Electric Photo Sensors

Product Brochure For S926



Safety Omron E3ZS Rear Light Sensor Guarding



One Shot Lubrication



Rear Guard Reset Button



Mobile Foot Control



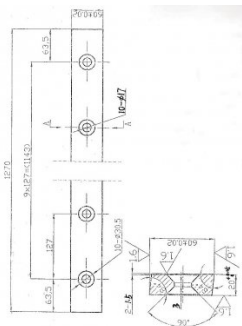
Emergency Stop Switch



Shown with Optional Ball Transfer Tables - Order Code (L840)

Recommended Accessories

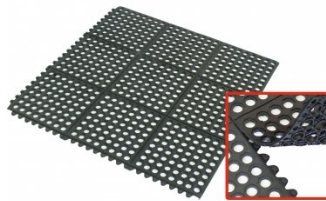
S9982
 2540mm Sheet Metal Guillotine
 Blade Set - 9CrSi



M800
 Rubber Mat - Anti-Fatigue



M805
 Rubber Mat - Anti-Fatigue



O000
 SpillFix Universal Organic
 Absorbent



Product Brochure For S926

O043
 Rust & Corrosion Preventive



O042
 General Purpose Lubricant & Corrosion Inhibitor



O040
 Rust & Corrosion Preventive



O044
 Rust & Corrosion Preventive



O004
 Superdraulic ISO 46 Hi Temp Hydraulic Oil

