

Product Brochure For V0925

125mm Steel Offset Fabricated Bench Vice - OSV-125

Right Hand Offset
 150mm Jaw Opening

On Sale

Ex GST

Inc GST

~~\$140.00~~

~~\$154.00~~

\$126.36

\$139.00



ORDER CODE:	V0925
Model:	OSV-125
Type:	Offset - Right Hand
Jaw Width (mm):	125
Jaw Height:	24
Jaw Opening (mm):	150
Overall Length (Closed Jaws) (mm):	369
Overall Width (mm):	131.1
Overall Height (mm):	160.4
Clamping Force (KN):	25
Nett Weight (kg):	10.8



Description

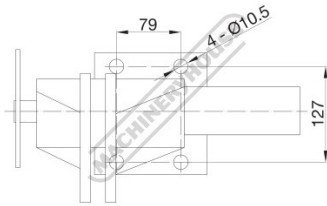
Fabricated from heavy steel plate and designed for heavy duty work, includes a handy in-built anvil.

Features

- Right hand offset design
- In-built anvil
- Hardened serrated jaws
- Double start nut for higher clamping force

Product Brochure For V0925

Specific Features



Base Dimensions

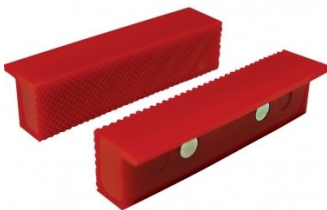
Recommended Accessories

V054
 Plastic Magnetic Soft Jaws

V0544
 Plastic Magnetic Soft Jaws

V053
 Aluminium Magnetic Soft Jaws

V0537
 Aluminium Magnetic Soft Jaws



V0534
 Aluminium Magnetic Soft Jaws

V050
 Vice Brake Bender - Suits
 Bench Vices

