

Product Brochure For V0926

150mm Steel Offset Fabricated Bench Vice - OSV-150

Right Hand Offset
 178mm Jaw Opening

On Sale

Ex GST

Inc GST

~~\$230.00~~

~~\$253.00~~

\$208.18

\$229.00



ORDER CODE:	V0926
Model:	OSV-150
Type:	Offset - Right Hand
Jaw Width (mm):	150
Jaw Height:	24
Jaw Opening (mm):	178
Overall Length (Closed Jaws) (mm):	470.5
Overall Width (mm):	275.4
Overall Height (mm):	194.5
Clamping Force (KN):	35
Nett Weight (kg):	22.1



Description

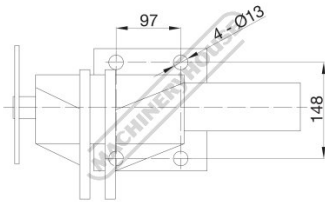
Fabricated from heavy steel plate and designed for heavy duty work, includes a handy in-built anvil.

Features

- Right hand offset design
- In-built anvil
- Hardened serrated jaws
- Double start nut for higher clamping force

Product Brochure For V0926

Specific Features



Base Dimensions

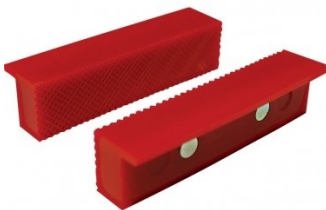
Recommended Accessories

V054
 Plastic Magnetic Soft Jaws

V0544
 Plastic Magnetic Soft Jaws

V053
 Aluminium Magnetic Soft Jaws

V0537
 Aluminium Magnetic Soft Jaws



V0534
 Aluminium Magnetic Soft Jaws

V050
 Vice Brake Bender - Suits
 Bench Vices

