

Product Brochure For V0928

## 200mm Steel Offset Fabricated Bench Vice - OSV-200

Right Hand Offset  
 228mm Jaw Opening

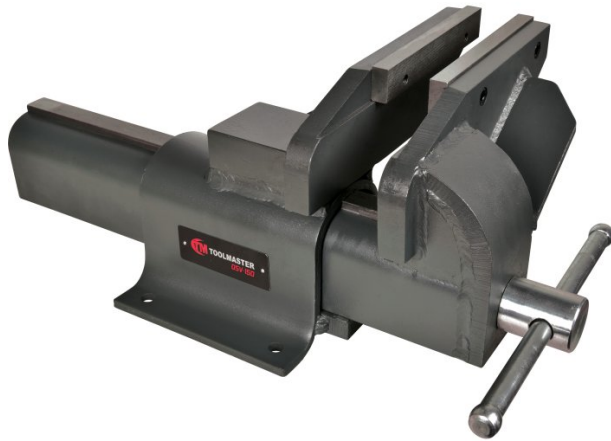
**On Sale**

Ex GST

~~\$450.00~~  
**\$408.18**

Inc GST

~~\$495.00~~  
**\$449.00**



ORDER CODE:	V0928
Model:	OSV-200
Type:	Offset - Right Hand
Jaw Width (mm):	200
Jaw Height:	31.75
Jaw Opening (mm):	228
Overall Length (Closed Jaws) (mm):	606
Overall Width (mm):	354
Overall Height (mm):	236
Clamping Force (KN):	60
Nett Weight (kg):	39



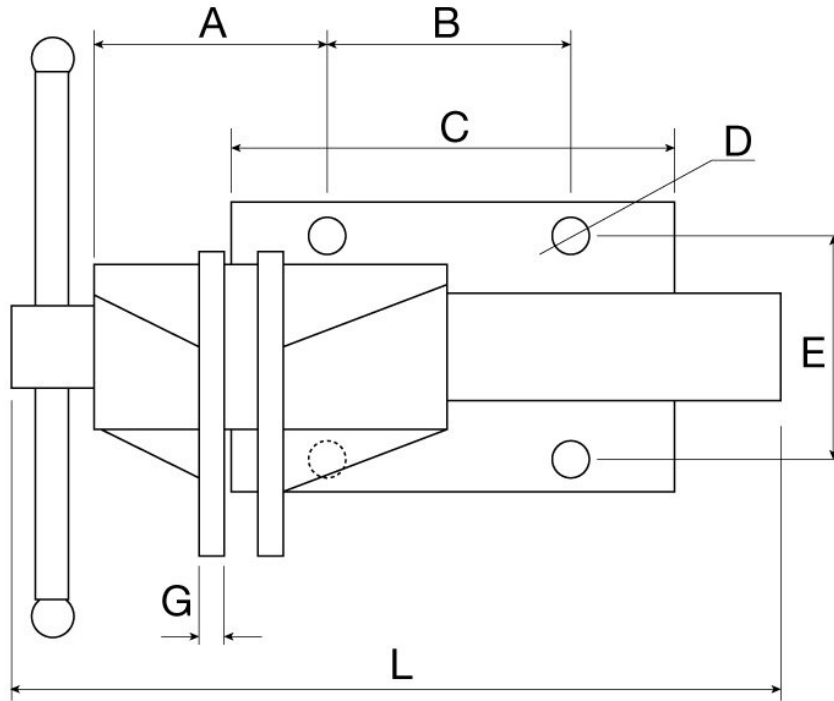
### Description

Fabricated from heavy steel plate and designed for heavy duty work, includes a handy in-built anvil.

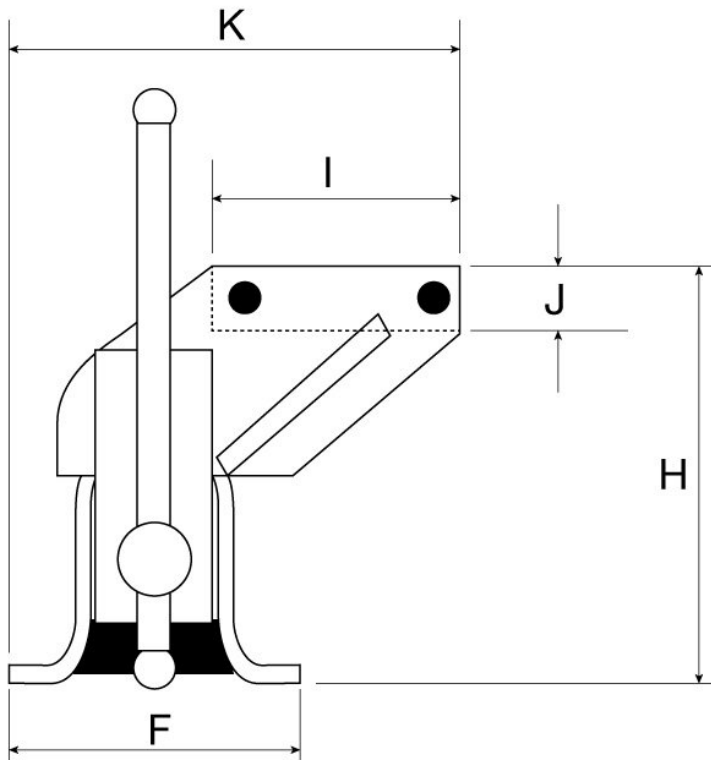
### Features

- Right hand offset design
- In-built anvil
- Hardened serrated jaws
- Double start nut for higher clamping force

Product Brochure For V0928

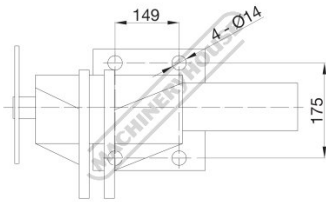


	A	B	C	D	E	F	G	H	I	J	K	L	Jaw Opening
<b>OSV-100</b>	83.3	50	80	Ø10.5	95	117	9.4	135	100	19.05	181.5	319	127
<b>OSV-125</b>	89.5	79	100	Ø10.5	127	148	12	160.4	125	24	231.1	369	150
<b>OSV-150</b>	112.5	97	150	Ø13	148	183	12	194.5	150	24	275.4	470.5	178
<b>OSV-200</b>	140.8	149	199	Ø14	175	210	15.9	236	203.7	31.75	354	606	228



Product Brochure For V0928

**Specific Features**



Base Dimensions

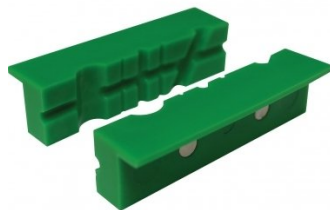
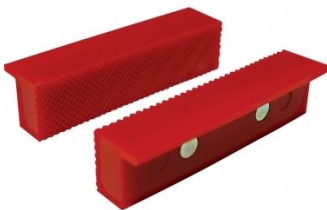
**Recommended Accessories**

V054  
 Plastic Magnetic Soft Jaws

V0544  
 Plastic Magnetic Soft Jaws

V053  
 Aluminium Magnetic Soft Jaws

V0537  
 Aluminium Magnetic Soft Jaws



V0534  
 Aluminium Magnetic Soft Jaws

V050  
 Vice Brake Bender - Suits  
 Bench Vices

