

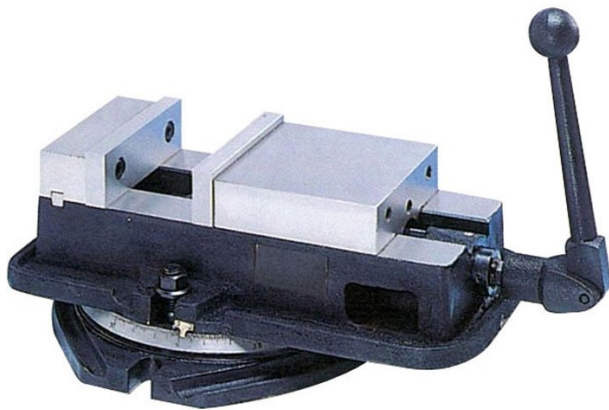
Product Brochure For V306

## Vertex Anglock Machine Vice - VA-6

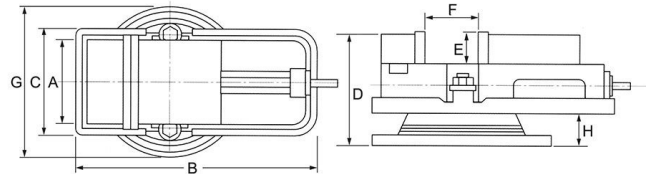
152mm Jaw Width  
 154mm Jaw Opening

**On Sale**

Ex GST	Inc GST
<del>\$490.00</del>	<del>\$539.00</del>
<b>\$450.00</b>	<b>\$495.00</b>



ORDER CODE:	V306
MODEL:	VA-6
A - Jaw Width (mm):	152
F - Jaw Opening (mm):	142
E - Jaw Depth (mm):	46
B (mm):	425
C (mm):	209
D (mm):	149
G (mm):	300
H (mm):	38
Nett Weight (kg):	45



### Description

The VERTEX Anglock vice has a ductile steel body with hardened and ground movable steel jaw.

### Features

- All surfaces are precision ground and the bed is flame hardened
- Spherical segment allows for all directional alignment
- When clamping, a downward pressure of 1kg is exerted by the movable jaw for every 2kg of clamping pressure, preventing the work piece from tilting
- Bearing thrust collar cuts friction and increases clamping pressure
- Swivel base is graduated to 360°

Product Brochure For V306

---

**Recommended Accessories**

V0532

Aluminium Magnetic Soft Jaws

V0539

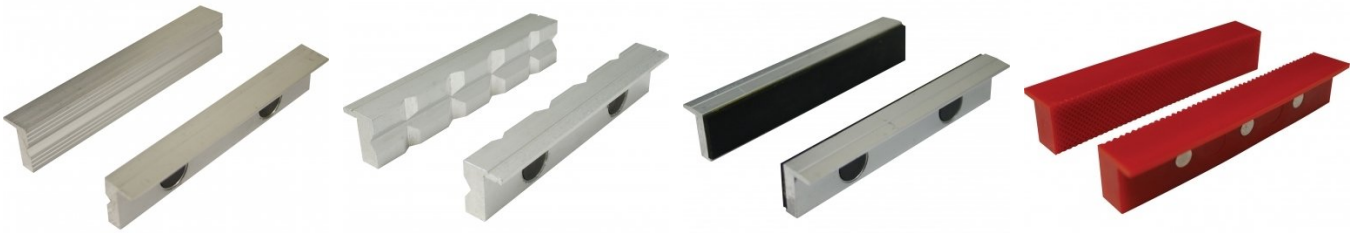
Aluminium Magnetic Soft Jaws

V0536

Aluminium Magnetic Soft Jaws

V0542

Plastic Magnetic Soft Jaws



V0546

Plastic Magnetic Soft Jaws

