

Product Brochure For W08290

Table & Accessory Lifting Kit - WT28-LFK2

1000kg WLL Total Capacity as a pair
 Suits Ø28mm Welding Tables Holes

On Sale

Ex GST

Inc GST

\$290.00

\$319.00

\$250.00

\$275.00



ORDER CODE:	W08290
MODEL:	WT28-LFK2
Type:	Lifting Kit
Size:	1000kg WLL & (500kg WLL each)
Quantity Per Pack (No.):	2
Suits:	Ø28mm Table Holes
Nett Weight (kg):	~

METALMASTER



Description

Use to assist in lifting of our METALMASTER M28 Pro Series welding tables, riser blocks & any large or heavy table accessories. The kit comes standard with 2pcs of 4-hole lifting plates with M24 Eye nuts along with 8pcs of ball lock pins to secure the plates in place making them the perfect addition to your welding table.

Features

- Heavy steel construction
- Fast & easy way to securely lift fixture elements to a table
- CNC machined surfaces to ensure precision tolerances
- Burnished finish surface treatment to prevent rust
- 1000kg WLL as a pair or 500kg WLL for each
- Suits Ø28mm Welding Tables Holes
- It is recommended that a minimum of 2 pairs (4pcs) of the lifting plates be used when lifting WT28-3015N - 3000 x 1500mm M28 Pro Welding Tables

Product Brochure For W08290

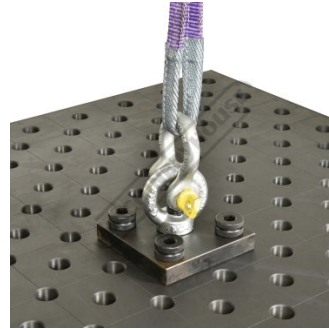
Specific Features



Table-accessory lifting kit



Lock position



Shown using optional shackle and strap



Shown using optional lifting kit

Recommended Accessories

W08255
 2000 x 1000mm M28 Pro Series
 Welding Table

W08257
 2400 x 1200mm M28 Pro Series
 Welding Table

W08260
 3000 x 1500mm M28 Pro Series
 Welding Table

