

Product Brochure For W08320

Right Angle Bracket / Stop - WT28-AB755

75 x 75 x 50mm

Suits Ø28mm Welding Tables Holes

On Sale

Ex GST

~~\$27.00~~

\$22.73

Inc GST

~~\$29.70~~

\$25.00



ORDER CODE:	W08320
MODEL:	WT28-AB755
Type:	Right Angle Bracket / Stop
Suits Table Hole Diameter (Ø (mm)):	Ø28mm
Size (mm):	75 x 75 x 50mm
Slot Length (mm):	~
Nett Weight (kg):	0.93

METALMASTER



Description

The perfect addition to complement our METALMASTER M28 Pro Series welding tables. The modular design makes it easy to set-up and tear down for your job at hand whether it is big or small. Increase precision & consistency for all your welding tasks to save you time and money.

Features

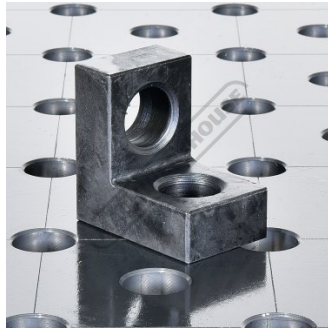
- Heavy 25mm thick steel construction
- CNC machined surfaces to ensure precision tolerances
- Burnished finish surface treatment to prevent rust

Product Brochure For W08320

Specific Features



75x75x50mm Angle Bracket



Shown On Welding Table

Recommended Accessories

W08280

42pc Welding Table Clamping & Fixturing Kit



W08301

180 Degree Welding Table Clamp with T-Bar Handle



W08304

90 Degree Welding Table Clamp with T-Bar Handle



W08307

45 Degree Welding Table Clamp with T-Bar Handle



W08372

Countersink Ball Lock Pin 28 x 50mm



W08370

Ball Lock Pin 28 x 50mm



W08371

Ball Lock Pin 28 x 75mm



W08360

Cross Type 90 / 120° V-Pad



Product Brochure For W08320

W08340
 Straight Bar Stop



W08341
 Straight Bar Stop



W08342
 Straight Bar Stop



W08343
 Straight Bar Stop



W08321
 Right Angle Bracket / Stop



W08324
 Right Angle Bracket / Stop



W08325
 Right Angle Bracket / Stop



W08330
 L Bracket



W08331
 L Bracket



W08335
 T Bracket



W08329
 Adjustable Angle Bracket



W08326
 Angle Bracket Set



Product Brochure For W08320

W08327
Angle Bracket Set



W08350
Riser Block



W08351
Riser Block



W08255
2000 x 1000mm M28 Pro Series
Welding Table



W08257
2400 x 1200mm M28 Pro Series
Welding Table



W08260
3000 x 1500mm M28 Pro Series
Welding Table

