

Product Brochure For W08326

## Angle Bracket Set - WT28-AB300LR

300 x 275 x 100mm

Suits Ø28mm Welding Tables Holes

**On Sale**

Ex GST

Inc GST

~~\$450.00~~

~~\$495.00~~

**\$380.00**

**\$418.00**



ORDER CODE:	W08326
MODEL:	WT28-AB300LR
Type:	Angle Bracket Set
Suits Table Hole Diameter (Ø (mm)):	Ø28mm
Size (mm):	300 x 275 x 100mm
Slot Length (mm):	~
Nett Weight (kg):	32

**METALMASTER**



### Description

The perfect addition to complement our METALMASTER M28 Pro Series welding tables. The modular design makes it easy to set-up and tear down for your job at hand whether it is big or small. Increase precision & consistency for all your welding tasks to save you time and money.

### Features

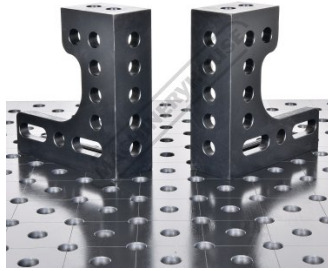
- Heavy steel construction
- Sold as a pair – 1 x LH & 1 x RH
- 4 machined surfaces with a combination of 28mm holes & slots
- CNC machined surfaces to ensure precision tolerances
- Burnished finish surface treatment to prevent rust

Product Brochure For W08326

Specific Features



Rear View



Shown On Welding Table

Recommended Accessories

W08280

42pc Welding Table Clamping & Fixturing Kit



W08301

180 Degree Welding Table Clamp with T-Bar Handle



W08304

90 Degree Welding Table Clamp with T-Bar Handle



W08307

45 Degree Welding Table Clamp with T-Bar Handle



W08372

Countersink Ball Lock Pin 28 x 50mm



W08370

Ball Lock Pin 28 x 50mm



W08371

Ball Lock Pin 28 x 75mm



W08360

Cross Type 90 / 120° V-Pad



Product Brochure For W08326

W08340  
 Straight Bar Stop



W08341  
 Straight Bar Stop



W08342  
 Straight Bar Stop



W08343  
 Straight Bar Stop



W08320  
 Right Angle Bracket / Stop



W08321  
 Right Angle Bracket / Stop



W08324  
 Right Angle Bracket / Stop



W08325  
 Right Angle Bracket / Stop



W08330  
 L Bracket



W08331  
 L Bracket



W08335  
 T Bracket



W08329  
 Adjustable Angle Bracket



Product Brochure For W08326

W08327  
Angle Bracket Set



W08350  
Riser Block



W08351  
Riser Block



W08255  
2000 x 1000mm M28 Pro Series  
Welding Table



W08257  
2400 x 1200mm M28 Pro Series  
Welding Table



W08260  
3000 x 1500mm M28 Pro Series  
Welding Table

