

Product Brochure For W08504

Locating Pin 16 x 40mm - SCLP-16

6pc Pack

Suits Ø16mm Welding Tables Holes

On Sale

Ex GST

~~\$24.00~~

\$20.00

Inc GST

~~\$26.40~~

\$22.00



ORDER CODE:	W08504
MODEL:	SCLP-16
Type:	Locating Pin
Suits Table Size (Ø):	16mm
Clamping Capacity:	~
Size:	16 x 40mm
Quantity Per Pack (No.):	6
Over all Length:	40mm
Nett Weight (kg):	0.07



Description

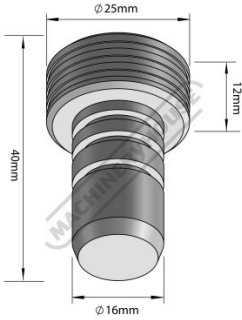
Locating pins are used as a fast & more economical way to position clamping fixtures compared to using multiple ball lock pins making set up time even faster. Designed for to join accessories to a welding table it can be used in any welding table between 5 to 16mm in thickness, the O-Rings also help to ensure a firm fit. It is recommended to use at least one ball lock pin in conjunction with the locating pins to ensure a secure lock of your fixture element to the table.

Features

- Fast & easy way to securely position fixture elements to a table or to other fixture elements
- Also use as a stop or material rest
- CNC machined surfaces to ensure precision tolerances
- Burnished finish surface treatment to prevent rust

Product Brochure For W08504

Specific Features



Dimensions



Front View



3 x O Rings



Top View



Shown On Welding Table

Recommended Accessories

W07705

66 Piece - Rhino Cart Mobile Fixturing Station

W07804

2000 x 1000mm M16 Pro Series Welding Table

W07811

2000 x 1000mm M16 Pro Series Welding Table

W07812

2400 x 1200mm M16 Pro Series Welding Table

