

Product Brochure For W1072

Switchable Multi-Angle Welding Magnet - WCM-140HD

45° & 90° Degrees
 70kg Pull Force

On Sale

Ex GST

Inc GST

~~\$59.00~~

~~\$64.90~~

\$50.00

\$55.00



ORDER CODE:	W1072
MODEL:	WCM-140HD
Type:	Switchable Dual-Angle Welding Magnet
Size:	~
Quantity Per Pack (No.):	1
Magnet Clamp Angle (deg):	45°, 90°
Pull Force (kg):	70
Nett Weight (kg):	1.4



Description

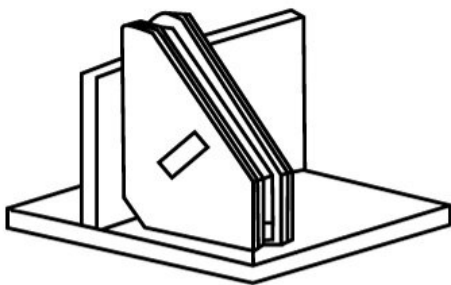
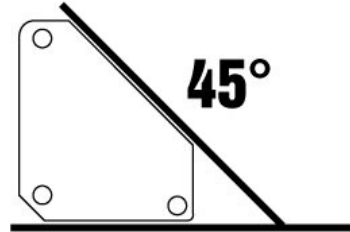
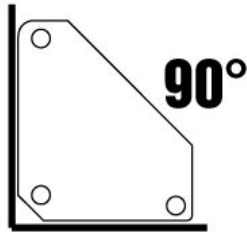
Multi-Angle welding magnetic tool for use in the workshop & or on site.

With the added benefit of a convenient on/off switch you can securely hold material while providing you with an unobstructed area for tack welds. Use the outer edges of the corner magnet for setting up materials at 45° & 90°.

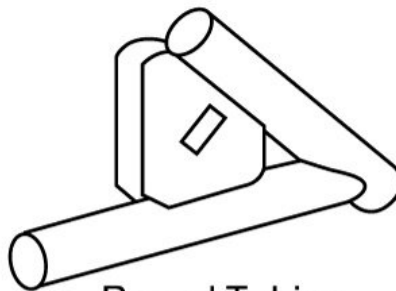
Features

- Powerful magnet complete with on/off switch
- Multi-Angle 45° & 90°
- Ideal for square tubing, angle and flat stock
- Easy to clean, simply turn off and wipe
- 70kg Max force
- *Magnetic force is based on the longest side of Magnet with 10mm thick steel

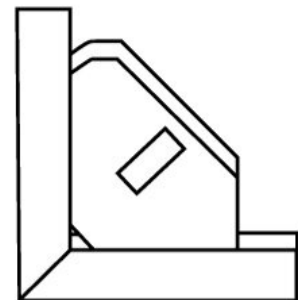
Product Brochure For W1072



Metal Plates

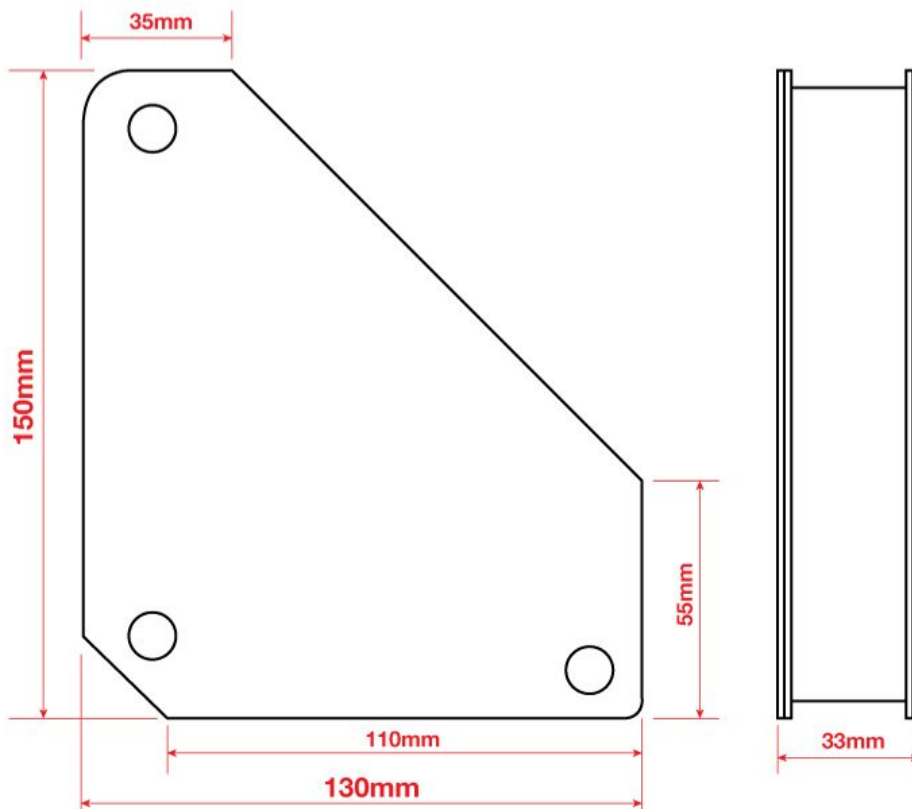


Round Tubing



Square Tubing

WCM-140HD - Dimensions



Product Brochure For W1072

Specific Features



Shown Set Up in 45 Degrees



Shown Set Up in 90 Degrees



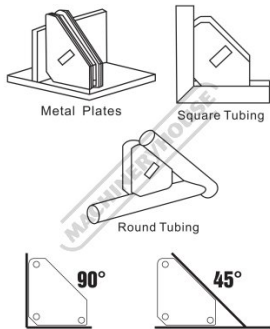
Shown Clamping Round Tube



Shown with Optional Smaller Mag Switch W1071

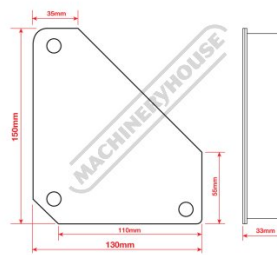


Front View



2 Angles 45 and 90 Degrees

WCM-140HD - Dimensions



Dimensions

Recommended Accessories

W1071
 Switchable Multi-Angle Welding Magnet

W1085
 Switchable Multi-Angle Welding Magnet

W1086
 Switchable Multi-Angle Welding Magnet

W1081
 Multi Angle Corner Magnets - 2pc Pack



Product Brochure For W1072

W1082

Multi Angle Corner Magnets -
2pc Pack



W1091

Magnetic Swivel V-Pad Clamps

