

Product Brochure For W385

Mini Wood Lathe - WL-14V

Ø356mm Swing x 470mm Between Centres
 Electronic Variable Spindle Speed with Digital Readout Display

On Sale

Ex GST	Inc GST
\$600.00	\$660.00
\$544.55	\$599.00



ORDER CODE:	W385
MODEL:	WL-14V
Swing Over Bed (mm):	356
Between Centres (mm):	470
Spindle Nose Thread:	M30 x 3.5 Pitch
Spindle Nose Taper (MT):	2
Spindle Speeds (rpm):	2 Steps, Variable Sped & 450-1800 & 900 - 3850
Tailstock Taper (MT):	2
Motor Power (kW / hp):	0.55 / 0.75
Voltage / Amperage (V / amp):	240 / 10
Floor Space (W x D x H) (mm):	1000 x 350 x 460
Floor Space With Option Stand (W x D x H) (mm):	1050 x 620 x 1220
Nett Weight (kg):	46



Description

The WL-14V wood lathe is perfect for the seasoned pen turner or enthused hobbyist looking for a reliable & sturdy mini lathe; but it does not stop here. The powerful 0.55kW/0.75hp motor is controlled via an electronic variable speed dial that certainly makes this lathe the perfect option for the professional turner as well. The lathe is also capable of reversing the rotation, which in turn is ideal for sanding and finishing.

Solid Construction

Well proven design. The critical components of the WL-14V variable speed Wood Lathe are made from cast-iron for strength, rigidity and vibration reduction.

Speed Range

Fitted with a 2-step Electronic Variable Speed motor with a low range for slower speeds from 450rpm up to 1800rpm. The high speed range from 900rpm up to 3850rpm ideal for miniature turning work. The electronic variable speed allows for quick dial-in of the correct speed required for your job.

Reverse Option

The WL-14V has the capability, at the flick of a switch, to change direction from forward to reverse. This feature enables the turner to sand with the lathe in reverse, eliminating problem areas which cannot normally be sanded smooth in the forward direction.

Optional Bed Extension System

An optional 650mm bed extension can be added to expand the turning length up to 1120mm. (WL-14X - W385X).

Optional Lathe Stand

Optional stand can be added to raise the lathe at a safe working height and freeing up valuable work bench space (WLS-1824 - W379).

Please note:

If adding optional bed extension (WL-14X - W385X) to your wood lathe, you will also need the optional stand extension (WLS-1824X - W379X) to suit stand (WLS-1824 - W379)

Features

- Cast iron construction, bed, head and tailstock
- Electronic variable speed dial (450-3850rpm)
- Digital readout speed display
- 12 position spindle indexing lock
- Dust proof magnetic safety switch
- 2 speed belt change system for maximum torque

Product Brochure For W385

- 300mm & 150mm tool rests for those smaller and larger jobs
- Tool storage tray for quick & easy access

Includes

- 2MT live centre
- 2MT spur drive centre
- 150mm tool rest
- 300mm tool rest
- 80mm faceplate
- Drawbar
- Spanner
- Hex keys
- Power lead

Specific Features



Left View



Right Side View



Rear View



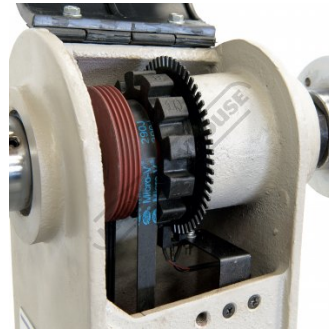
Electronic Variable Speed



Left End View



Headstock



12 Position Spindle Indexing



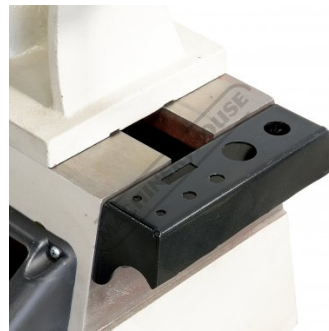
Spindle Handle



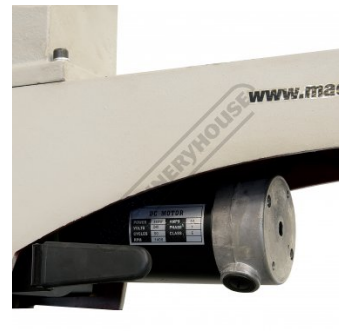
Tailstock



300mm Tool Rest



Tool Storage Tray



Motor

Product Brochure For W385



Shown on Optional Stand

Recommended Accessories

W379
Adjustable Wood Lathe Stand



W385X
Lathe Bed Extension - 650mm



W379X
Adjustable Wood Lathe Stand Extension



W295
Curved Tool Rest Set



W300
Carbide Wood Turning Tools - 6 Piece Set



W301
HSS Wood Turning Tools - 8 Piece Set



W302
HSS Wood Turning Tools - 6 Piece Set



W3033
HSS Pen Turning Tools - 3 Piece Set



Product Brochure For W385

W3034
 HSS Wood Turning Tools - 4
 Piece Set



W3039
 HSS Wood Turning Tools - 4
 Piece Set



W305
 Bowl Sanding Tool



C289
 Heavy Duty Drill Chuck - Keyed
 Type



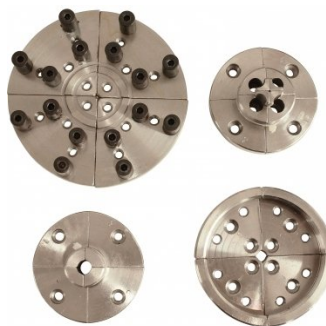
D442
 2MT x JT6 Drill Chuck Arbor



W370
 Scroll Chuck - 100mm



W375
 Scroll Chuck Accessory Kit



W297
 Face Plate



W298
 Face Plate



W306
 Pen Mandrel Set - 2MT



W366
 Scroll Chuck Insert - M30 x
 3.5mm



W338B
 Wood Lathe - Dust Chute - Big
 Gulp

